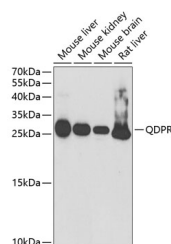


QDPR Polyclonal Antibody

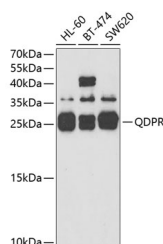
Catalog No.	E-AB-61090	Reactivity	H,M,R
Storage	Store at -20°C. Avoid freeze / thaw cycles.	Host	Rabbit
Applications	WB	Isotype	IgG

Note: Centrifuge before opening to ensure complete recovery of vial contents.

Images



Western blot analysis of extracts of various cell lines using QDPR Polyclonal Antibody at 1:1000 dilution.



Western blot analysis of extracts of various cell lines using QDPR Polyclonal Antibody at 1:3000 dilution.

Immunogen Information

Immunogen	Recombinant fusion protein of human QDPR
GeneID	5860
Swissprot	P09417
Synonyms	QDPR,DHPR,PKU2,SDR33C1

Product Information

Calculated MW	22kDa/25kDa
Observed MW	26kDa
Buffer	PBS with 0.02% sodium azide,50% glycerol,pH7.3.
Purify	Affinity purification
Dilution	WB 1:500-1:2000

Background

This gene encodes the enzyme dihydropteridine reductase, which catalyzes the NADH-mediated reduction of quinonoid dihydrobiopterin. This enzyme is an essential component of the pterin-dependent aromatic amino acid hydroxylating systems. Mutations in this gene resulting in QDPR deficiency include aberrant splicing, amino acid substitutions, insertions, or premature terminations. Dihydropteridine reductase deficiency presents as atypical phenylketonuria due to insufficient production of biopterin, a cofactor for phenylalanine hydroxylase.

For Research Use Only

Thank you for your recent purchase.
 If you would like to learn more about antibodies, please visit www.elabscience.com.

**Focus on your research
 Service for life science**

Applications:WB-Western Blot IHC-Immunohistochemistry IF-Immunofluorescence IP-Immunoprecipitation FC-Flow cytometry ChIP-Chromatin Immunoprecipitation Reactivity: H-Human R-Rat M-Mouse Mk-Monkey Dg-Dog Ch-Chicken Hm-Hamster Rb-Rabbit Sh-Sheep Pg-Pig Z-Zebrafish X-Xenopus C-Cow.