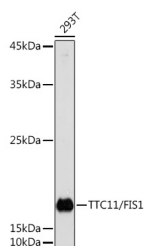


TTC11 / FIS1 Polyclonal Antibody

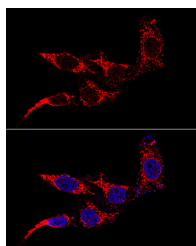
| | | | |
|---------------------|---|-------------------|--------|
| Catalog No. | E-AB-61132 | Reactivity | H,M,R |
| Storage | Store at -20°C. Avoid freeze / thaw cycles. | Host | Rabbit |
| Applications | WB,IF | Isotype | IgG |

Note: Centrifuge before opening to ensure complete recovery of vial contents.

Images



Western blot analysis of extracts of 293T cells using TTC11/FIS1 Polyclonal Antibody at 1:1000 dilution.



Confocal immunofluorescence analysis of HeLa cells using TTC11/FIS1 Polyclonal Antibody at dilution of 1:50 (60x lens). Blue: DAPI for nuclear staining.

Immunogen Information

| | |
|------------------|--|
| Immunogen | Recombinant fusion protein of human TTC11 / FIS1 |
| GeneID | 51024 |
| Swissprot | Q9Y3D6 |
| Synonyms | CGI-135,TTC11,FIS1,TTC11 / FIS1,fission |

Product Information

| | |
|----------------------|---|
| Calculated MW | 16kDa |
| Observed MW | 17KDa |
| Buffer | PBS with 0.05% proclin300,50% glycerol,pH7.3. |
| Purify | Affinity purification |
| Dilution | WB 1:500-1:2000,IF 1:50-1:200 |

Background

The balance between fission and fusion regulates the morphology of mitochondria. TTC11 is a component of a mitochondrial complex that promotes mitochondrial fission (James et al., 2003 [PubMed 12783892]).[supplied by OMIM, Mar 2008]

For Research Use Only

Thank you for your recent purchase.
 If you would like to learn more about antibodies, please visit www.elabscience.com.

**Focus on your research
 Service for life science**

Applications:WB-Western Blot IHC-Immunohistochemistry IF-Immunofluorescence IP-Immunoprecipitation FC-Flow cytometry ChIP-Chromatin Immunoprecipitation Reactivity: H-Human R-Rat M-Mouse Mk-Monkey Dg-Dog Ch-Chicken Hm-Hamster Rb-Rabbit Sh-Sheep Pg-Pig Z-Zebrafish X-Xenopus C-Cow.