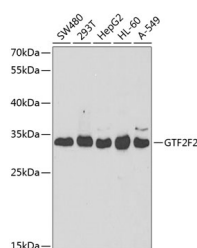


## GTF2F2 Polyclonal Antibody

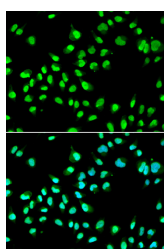
<b>Catalog No.</b>	E-AB-61136	<b>Reactivity</b>	H
<b>Storage</b>	Store at -20°C. Avoid freeze / thaw cycles.	<b>Host</b>	Rabbit
<b>Applications</b>	WB,IF	<b>Isotype</b>	IgG

**Note:** Centrifuge before opening to ensure complete recovery of vial contents.

### Images



Western blot analysis of extracts of various cell lines using GTF2F2 Polyclonal Antibody at dilution of 1:1000.



Immunofluorescence analysis of A549 cells using GTF2F2 Polyclonal Antibody

### Immunogen Information

<b>Immunogen</b>	Recombinant fusion protein of human GTF2F2 (NP_004119.1).
<b>GeneID</b>	2963
<b>Swissprot</b>	P13984
<b>Synonyms</b>	GTF2F2,BTF4,RAP30,TF2F2,TFIIF

### Product Information

<b>Calculated MW</b>	28kDa
<b>Observed MW</b>	29kDa
<b>Buffer</b>	PBS with 0.02% sodium azide, 50% glycerol, pH7.3.
<b>Purify</b>	Affinity purification
<b>Dilution</b>	WB 1:500-1:2000 IF 1:50-1:200

### Background

GTF2F2 (General Transcription Factor IIF Subunit 2) is a Protein Coding gene. Among its related pathways are RNA Polymerase II Transcription Initiation And Promoter Clearance and Signaling by FGFR2 in disease. Gene Ontology (GO) annotations related to this gene include helicase activity and ATP-dependent helicase activity.

#### For Research Use Only

Thank you for your recent purchase.  
If you would like to learn more about antibodies, please visit [www.elabscience.com](http://www.elabscience.com).

#### Focus on your research Service for life science

Applications:WB-Western Blot IHC-Immunohistochemistry IF-Immunofluorescence IP-Immunoprecipitation FC-Flow cytometry ChIP-Chromatin Immunoprecipitation Reactivity: H-Human R-Rat M-Mouse Mk-Monkey Dg-Dog Ch-Chicken Hm-Hamster Rb-Rabbit Sh-Sheep Pg-Pig Z-Zebrafish X-Xenopus C-Cow.