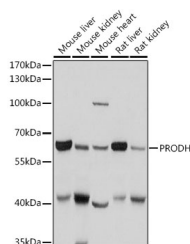


PRODH Polyclonal Antibody

Catalog No.	E-AB-61142	Reactivity	H,M,R
Storage	Store at -20°C. Avoid freeze / thaw cycles.	Host	Rabbit
Applications	WB	Isotype	IgG

Note: Centrifuge before opening to ensure complete recovery of vial contents.

Images



Western blot analysis of extracts of various cell lines using PRODH Polyclonal Antibody at 1:1000 dilution.

Immunogen Information

Immunogen	Recombinant fusion protein of human PRODH
GeneID	5625
Swissprot	O43272
Synonyms	PRODH,HSPOX2,PIG6,POX,PRODH1,PRODH2,TP53I6

Product Information

Calculated MW	56kDa/59kDa/68kDa
Observed MW	68kDa
Buffer	PBS with 0.02% sodium azide,50% glycerol,pH7.3.
Purify	Affinity purification
Dilution	WB 1:500-1:2000

Background

This gene encodes a mitochondrial protein that catalyzes the first step in proline degradation. Mutations in this gene are associated with hyperprolinemia type 1 and susceptibility to schizophrenia 4 (SCZD4). This gene is located on chromosome 22q11.21, a region which has also been associated with the contiguous gene deletion syndromes, DiGeorge and CATCH22. Alternatively spliced transcript variants encoding different isoforms have been found for this gene.

For Research Use Only

Thank you for your recent purchase.
 If you would like to learn more about antibodies, please visit www.elabscience.com.

**Focus on your research
 Service for life science**

Applications:WB-Western Blot IHC-Immunohistochemistry IF-Immunofluorescence IP-Immunoprecipitation FC-Flow cytometry ChIP-Chromatin Immunoprecipitation Reactivity: H-Human R-Rat M-Mouse Mk-Monkey Dg-Dog Ch-Chicken Hm-Hamster Rb-Rabbit Sh-Sheep Pg-Pig Z-Zebrafish X-Xenopus C-Cow.