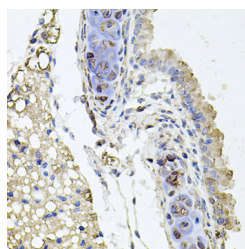


## RHOT1 Polyclonal Antibody

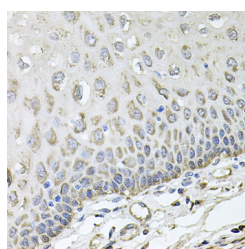
<b>Catalog No.</b>	E-AB-61143	<b>Reactivity</b>	H,M,R
<b>Storage</b>	Store at -20°C. Avoid freeze / thaw cycles.	<b>Host</b>	Rabbit
<b>Applications</b>	IHC	<b>Isotype</b>	IgG

**Note:** Centrifuge before opening to ensure complete recovery of vial contents.

### Images



Immunohistochemistry of paraffin-embedded Mouse lung using RHOT1 Polyclonal Antibody at dilution of 1:100 (40x lens).



Immunohistochemistry of paraffin-embedded Human esophagus using RHOT1 Polyclonal Antibody at dilution of 1:100 (40x lens).

### Immunogen Information

<b>Immunogen</b>	Recombinant fusion protein of human RHOT1 (NP_060777.3).
<b>GeneID</b>	55288
<b>Swissprot</b>	Q8IXI2
<b>Synonyms</b>	RHOT1,ARHT1,MIRO-1,MIRO1

### Product Information

<b>Buffer</b>	PBS with 0.02% sodium azide, 50% glycerol, pH7.3.
<b>Purify</b>	Affinity purification
<b>Dilution</b>	IHC 1:50-1:100

### Background

RHOT1 (Ras Homolog Family Member T1) is a Protein Coding gene. Diseases associated with RHOT1 include Myopathy With Extrapyrimalidal Signs and Cataract 3, Multiple Types. Among its related pathways are Signaling by GPCR and Metabolism of proteins. Gene Ontology (GO) annotations related to this gene include calcium ion binding and GTPase activity. An important paralog of this gene is RHOT2.

#### For Research Use Only

Thank you for your recent purchase.  
 If you would like to learn more about antibodies, please visit [www.elabscience.com](http://www.elabscience.com).

**Focus on your research  
 Service for life science**

Applications:WB-Western Blot IHC-Immunohistochemistry IF-Immunofluorescence IP-Immunoprecipitation FC-Flow cytometry ChIP-Chromatin Immunoprecipitation Reactivity: H-Human R-Rat M-Mouse Mk-Monkey Dg-Dog Ch-Chicken Hm-Hamster Rb-Rabbit Sh-Sheep Pg-Pig Z-Zebrafish X-Xenopus C-Cow.