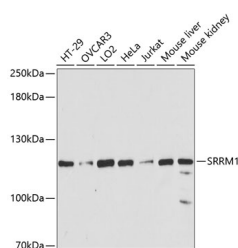


## SRRM1 Polyclonal Antibody

<b>Catalog No.</b>	E-AB-65529	<b>Reactivity</b>	H,M
<b>Storage</b>	Store at -20°C. Avoid freeze / thaw cycles.	<b>Host</b>	Rabbit
<b>Applications</b>	WB	<b>Isotype</b>	IgG

**Note:** Centrifuge before opening to ensure complete recovery of vial contents.

### Images



Western blot analysis of extracts of various cell lines using SRRM1 Polyclonal Antibody at dilution of 1:3000.

### Immunogen Information

<b>Immunogen</b>	Recombinant fusion protein of human SRRM1 (NP_005830.2).
<b>GeneID</b>	10250
<b>Swissprot</b>	Q8IYB3
<b>Synonyms</b>	SRRM1,160-KD,POP101,SRM160

### Product Information

<b>Calculated MW</b>	102kDa
<b>Observed MW</b>	102kDa
<b>Buffer</b>	PBS with 0.02% sodium azide, 50% glycerol, pH7.3.
<b>Purify</b>	Affinity purification
<b>Dilution</b>	WB 1:500-1:1000

### Background

SRRM1 (Serine And Arginine Repetitive Matrix 1) is a Protein Coding gene. Diseases associated with SRRM1 include Cortical Thymoma and Epithelial Malignant Thymoma. Among its related pathways are Cleavage of Growing Transcript in the Termination Region and Transport of Mature Transcript to Cytoplasm.

#### For Research Use Only

Thank you for your recent purchase.  
 If you would like to learn more about antibodies, please visit [www.elabscience.com](http://www.elabscience.com).

**Focus on your research  
 Service for life science**

Applications: WB-Western Blot IHC-Immunohistochemistry IF-Immunofluorescence IP-Immunoprecipitation FC-Flow cytometry ChIP-Chromatin Immunoprecipitation Reactivity: H-Human R-Rat M-Mouse Mk-Monkey Dg-Dog Ch-Chicken Hm-Hamster Rb-Rabbit Sh-Sheep Pg-Pig Z-Zebrafish X-Xenopus C-Cow.