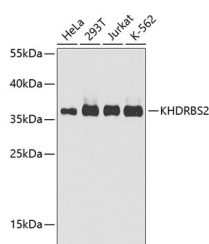


KHDRBS2 Polyclonal Antibody

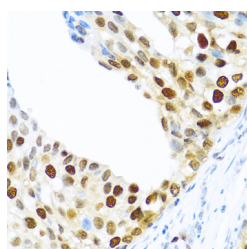
Catalog No.	E-AB-63223	Reactivity	H,M
Storage	Store at -20°C. Avoid freeze / thaw cycles.	Host	Rabbit
Applications	WB,IHC	Isotype	IgG

Note: Centrifuge before opening to ensure complete recovery of vial contents.

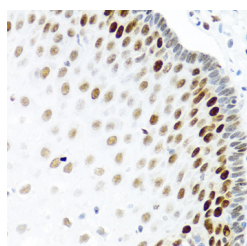
Images



Western blot analysis of extracts of various cell lines using KHDRBS2 Polyclonal Antibody at dilution of 1:1000.



Immunohistochemistry of paraffin-embedded Human prostate cancer using KHDRBS2 Polyclonal Antibody at dilution of 1:100 (40x lens).



Immunohistochemistry of paraffin-embedded Human esophagus using KHDRBS2 Polyclonal Antibody at dilution of 1:100 (40x lens).

Immunogen Information

Immunogen	A synthetic peptide of human KHDRBS2 (NP_689901.2).
GeneID	202559
Swissprot	Q5VWX1
Synonyms	KHDRBS2,SLM-1,SLM1

Product Information

Calculated MW	38kDa
Observed MW	39kDa
Buffer	PBS with 0.02% sodium azide, 50% glycerol, pH7.3.
Purify	Affinity purification
Dilution	WB 1:500-1:1000 IHC 1:100-1:200

Background

KHDRBS2 (KH RNA Binding Domain Containing, Signal Transduction Associated 2) is a Protein Coding gene. Diseases associated with KHDRBS2 include Atrial Septal Defect 2. Among its related pathways are Signaling by GPCR and Signaling by PTK6. Gene Ontology (GO) annotations related to this gene include nucleic acid binding and protein heterodimerization activity. An important paralog of this gene is KHDRBS3.

For Research Use Only

Thank you for your recent purchase.
 If you would like to learn more about antibodies, please visit www.elabscience.com.

**Focus on your research
 Service for life science**

Applications:WB-Western Blot IHC-Immunohistochemistry IF-Immunofluorescence IP-Immunoprecipitation FC-Flow cytometry ChIP-Chromatin Immunoprecipitation Reactivity: H-Human R-Rat M-Mouse Mk-Monkey Dg-Dog Ch-Chicken Hm-Hamster Rb-Rabbit Sh-Sheep Pg-Pig Z-Zebrafish X-Xenopus C-Cow.