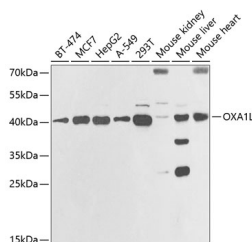


OXA1L Polyclonal Antibody

| | | | |
|---------------------|---|-------------------|--------|
| Catalog No. | E-AB-61870 | Reactivity | H,M,R |
| Storage | Store at -20°C. Avoid freeze / thaw cycles. | Host | Rabbit |
| Applications | WB | Isotype | IgG |

Note: Centrifuge before opening to ensure complete recovery of vial contents.

Images



Western blot analysis of extracts of various cell lines using OXA1L Polyclonal Antibody at 1:1000 dilution.

Immunogen Information

| | |
|------------------|---|
| Immunogen | Recombinant fusion protein of human OXA1L |
| GeneID | 5018 |
| Swissprot | Q15070 |
| Synonyms | OXA1L,OXA1 |

Product Information

| | |
|----------------------|---|
| Calculated MW | 28kDa/46kDa/48kDa |
| Observed MW | 42kDa |
| Buffer | PBS with 0.02% sodium azide,50% glycerol,pH7.3. |
| Purify | Affinity purification |
| Dilution | WB 1:500-1:2000 |

Background

This gene encodes an evolutionarily conserved protein that is localized to the inner mitochondrial membrane. The encoded protein is essential for the translocation of the N-terminal tail of subunit 2 of cytochrome c oxidase, and is involved in the assembly of the cytochrome c oxidase and ATPase complexes of the mitochondrial respiratory chain.

For Research Use Only

Thank you for your recent purchase.
 If you would like to learn more about antibodies, please visit www.elabscience.com.

**Focus on your research
 Service for life science**

Applications:WB-Western Blot IHC-Immunohistochemistry IF-Immunofluorescence IP-Immunoprecipitation FC-Flow cytometry ChIP-Chromatin Immunoprecipitation Reactivity: H-Human R-Rat M-Mouse Mk-Monkey Dg-Dog Ch-Chicken Hm-Hamster Rb-Rabbit Sh-Sheep Pg-Pig Z-Zebrafish X-Xenopus C-Cow.