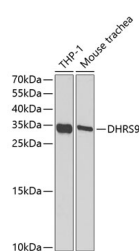


DHRS9 Polyclonal Antibody

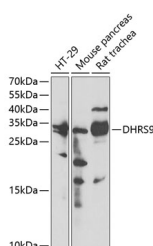
Catalog No.	E-AB-61888	Reactivity	H,M,R
Storage	Store at -20°C. Avoid freeze / thaw cycles.	Host	Rabbit
Applications	WB,IF	Isotype	IgG

Note: Centrifuge before opening to ensure complete recovery of vial contents.

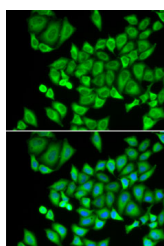
Images



Western blot analysis of extracts of various cell lines using DHRS9 Polyclonal Antibody at 1:1000 dilution.



Western blot analysis of extracts of various cell lines using DHRS9 Polyclonal Antibody at 1:3000 dilution.



Immunofluorescence analysis of U2OS cells using DHRS9 Polyclonal antibody. Blue: DAPI for nuclear staining.

Immunogen Information

Immunogen	Recombinant fusion protein of human DHRS9
GeneID	10170
Swissprot	Q9BPW9
Synonyms	DHRS9,3-alpha-HSD,3ALPHA-HSD,RDH-E2,RDH-TBE,RDH15,RDHL,RDHTBE,RETSDR8,SDR9C4

Product Information

Calculated MW	18kDa/30kDa/35kDa/41kDa
Observed MW	35kDa
Buffer	PBS with 0.02% sodium azide,50% glycerol,pH7.3.
Purify	Affinity purification
Dilution	WB 1:500-1:2000,IF 1:10-1:100

Background

This gene encodes a member of the short-chain dehydrogenases/reductases (SDR) family. The encoded protein has been identified as a moonlighting protein based on its ability to perform mechanistically distinct functions. This protein demonstrates oxidoreductase activity toward hydroxysteroids and is able to convert 3-alpha-tetrahydroprogesterone to dihydroxyprogesterone and 3-alpha-androstanediol to dihydroxyprogesterone in the cytoplasm, and may additionally function as a transcriptional repressor in the nucleus. Alternative splicing results in multiple transcript variants.

For Research Use Only

Thank you for your recent purchase.
 If you would like to learn more about antibodies, please visit www.elabscience.com.

Focus on your research
Service for life science

Applications:WB-Western Blot IHC-Immunohistochemistry IF-Immunofluorescence IP-Immunoprecipitation FC-Flow cytometry ChIP-Chromatin Immunoprecipitation Reactivity: H-Human R-Rat M-Mouse Mk-Monkey Dg-Dog Ch-Chicken Hm-Hamster Rb-Rabbit Sh-Sheep Pg-Pig Z-Zebrafish X-Xenopus C-Cow.