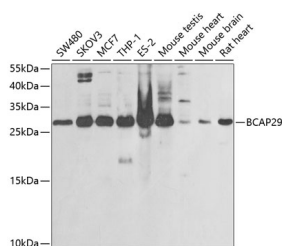


BCAP29 Polyclonal Antibody

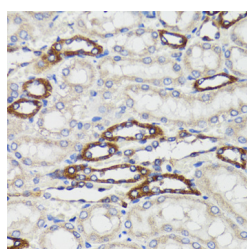
| | | | |
|---------------------|---|-------------------|--------|
| Catalog No. | E-AB-61895 | Reactivity | H,M,R |
| Storage | Store at -20°C. Avoid freeze / thaw cycles. | Host | Rabbit |
| Applications | WB,IHC | Isotype | IgG |

Note: Centrifuge before opening to ensure complete recovery of vial contents.

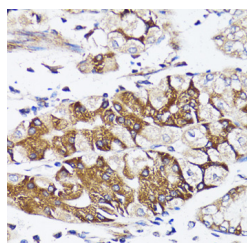
Images



Western blot analysis of extracts of various cell lines using BCAP29 Polyclonal Antibody at 1:1000 dilution.



Immunohistochemistry of paraffin-embedded rat kidney using BCAP29 Polyclonal Antibody at dilution of 1:100 (40x lens). Perform microwave antigen retrieval with 10 mM PBS buffer pH 7.2 before commencing with IHC staining protocol.



Immunohistochemistry of paraffin-embedded human stomach using BCAP29 Polyclonal antibody at dilution of 1:100 (40x lens). Perform microwave antigen retrieval with 10

Immunogen Information

| | |
|------------------|--|
| Immunogen | Recombinant fusion protein of human BCAP29 |
| GeneID | 55973 |
| Swissprot | Q9UHQ4 |
| Synonyms | BCAP29,BAP29 |

Product Information

| | |
|----------------------|---|
| Calculated MW | 28kDa/40kDa |
| Observed MW | 28kDa |
| Buffer | PBS with 0.02% sodium azide,50% glycerol,pH7.3. |
| Purify | Affinity purification |
| Dilution | WB 1:500-1:2000,IHC 1:50-1:200 |

Background

May play a role in anterograde transport of membrane proteins from the endoplasmic reticulum to the Golgi. May be involved in CASP8-mediated apoptosis (By similarity).

For Research Use Only

Thank you for your recent purchase.
 If you would like to learn more about antibodies, please visit www.elabscience.com.

**Focus on your research
 Service for life science**

Applications:WB-Western Blot IHC-Immunohistochemistry IF-Immunofluorescence IP-Immunoprecipitation FC-Flow cytometry ChIP-Chromatin Immunoprecipitation Reactivity: H-Human R-Rat M-Mouse Mk-Monkey Dg-Dog Ch-Chicken Hm-Hamster Rb-Rabbit Sh-Sheep Pg-Pig Z-Zebrafish X-Xenopus C-Cow.

mM PBS buffer pH 7.2 before
commencing with IHC staining
protocol.

For Research Use Only

Thank you for your recent purchase.

If you would like to learn more about antibodies, please visit www.elabscience.com.

**Focus on your research
Service for life science**

Applications:WB-Western Blot IHC-Immunohistochemistry IF-Immunofluorescence IP-Immunoprecipitation FC-Flow cytometry CHIP-
Chromatin Immunoprecipitation Reactivity: H-Human R-Rat M-Mouse Mk-Monkey Dg-Dog Ch-Chicken Hm-Hamster Rb-Rabbit Sh-
Sheep Pg-Pig Z-Zebrafish X-Xenopus C-Cow.