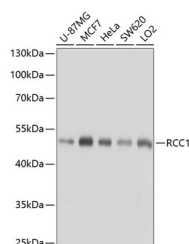


RCC1 Polyclonal Antibody

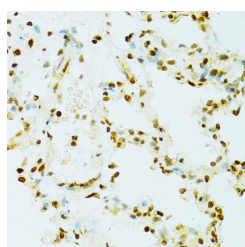
Catalog No.	E-AB-63849	Reactivity	H,M,R
Storage	Store at -20°C. Avoid freeze / thaw cycles.	Host	Rabbit
Applications	WB,IHC,IF	Isotype	IgG

Note: Centrifuge before opening to ensure complete recovery of vial contents.

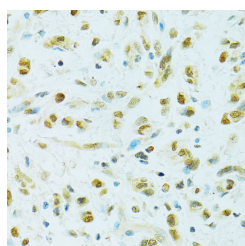
Images



Western blot analysis of extracts of various cell lines using RCC1 Polyclonal Antibody at dilution of 1:1000.



Immunohistochemistry of paraffin-embedded Rat lung using RCC1 Polyclonal Antibody at dilution of 1:100 (40x lens).



Immunohistochemistry of paraffin-embedded Human gastric cancer using RCC1 Polyclonal Antibody at dilution of 1:100 (40x lens).

Immunogen Information

Immunogen	Recombinant fusion protein of human RCC1 (NP_001260.1).
GeneID	1104
Swissprot	P18754
Synonyms	RCC1,CHC1,RCC1-I,SNHG3-RCC1

Product Information

Calculated MW	44kDa/48kDa
Observed MW	45kDa
Buffer	PBS with 0.02% sodium azide, 50% glycerol, pH7.3.
Purify	Affinity purification
Dilution	WB 1:1000-1:2000 IHC 1:50-1:200 IF 1:50-1:200

Background

RCC1 (Regulator Of Chromosome Condensation 1) is a Protein Coding gene. Diseases associated with RCC1 include Raynaud Disease and Microcystic Meningioma. Among its related pathways are Cell cycle_Spindle assembly and chromosome separation and Transport of the SLBP independent Mature mRNA. Gene Ontology (GO) annotations related to this gene include chromatin binding and nucleosomal DNA binding. An important paralog of this gene is HERC1.

For Research Use Only

Thank you for your recent purchase.
 If you would like to learn more about antibodies, please visit www.elabscience.com.

**Focus on your research
 Service for life science**

Applications:WB-Western Blot IHC-Immunohistochemistry IF-Immunofluorescence IP-Immunoprecipitation FC-Flow cytometry ChIP-Chromatin Immunoprecipitation Reactivity: H-Human R-Rat M-Mouse Mk-Monkey Dg-Dog Ch-Chicken Hm-Hamster Rb-Rabbit Sh-Sheep Pg-Pig Z-Zebrafish X-Xenopus C-Cow.