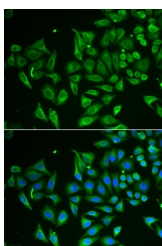


CLEC3B Polyclonal Antibody

Catalog No.	E-AB-61949	Reactivity	H,M,R
Storage	Store at -20°C. Avoid freeze / thaw cycles.	Host	Rabbit
Applications	IF	Isotype	IgG

Note: Centrifuge before opening to ensure complete recovery of vial contents.

Images



Immunofluorescence analysis of HeLa cells using CLEC3B Polyclonal Antibody

Immunogen Information

Immunogen	Recombinant fusion protein of human CLEC3B (NP_003269.2).
GeneID	7123
Swissprot	P05452
Synonyms	CLEC3B,TN,TNA

Product Information

Buffer	PBS with 0.02% sodium azide, 50% glycerol, pH7.3.
Purify	Affinity purification
Dilution	IF 1:10-1:100

Background

CLEC3B (C-Type Lectin Domain Family 3 Member B) is a Protein Coding gene. Among its related pathways are Response to elevated platelet cytosolic Ca²⁺. GO annotations related to this gene include calcium ion binding and heparin binding. An important paralog of this gene is CLEC3A.

For Research Use Only

Thank you for your recent purchase.

If you would like to learn more about antibodies, please visit www.elabscience.com.

**Focus on your research
 Service for life science**

Applications:WB-Western Blot IHC-Immunohistochemistry IF-Immunofluorescence IP-Immunoprecipitation FC-Flow cytometry ChIP-Chromatin Immunoprecipitation Reactivity: H-Human R-Rat M-Mouse Mk-Monkey Dg-Dog Ch-Chicken Hm-Hamster Rb-Rabbit Sh-Sheep Pg-Pig Z-Zebrafish X-Xenopus C-Cow.