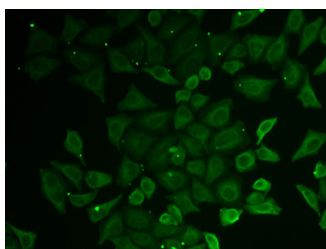


(KO Validated) C21orf33 Polyclonal Antibody

| | | | |
|---------------------|---|-------------------|--------|
| Catalog No. | E-AB-61956 | Reactivity | H,M,R |
| Storage | Store at -20°C. Avoid freeze / thaw cycles. | Host | Rabbit |
| Applications | IF | Isotype | IgG |

Note: Centrifuge before opening to ensure complete recovery of vial contents.

Images



Immunofluorescence analysis of U2OS cells using C21orf33 Polyclonal Antibody

Immunogen Information

| | |
|------------------|---|
| Immunogen | Recombinant fusion protein of human C21orf33 (NP_004640.4). |
| GeneID | 8209 |
| Swissprot | P30042 |
| Synonyms | C21orf33,ES1,GATD3,GT335,HES1,KNPH,KNPI |

Product Information

| | |
|-----------------|---|
| Buffer | PBS with 0.02% sodium azide, 50% glycerol, pH7.3. |
| Purify | Affinity purification |
| Dilution | IF 1:10-1:100 |

Background

This gene encodes a potential mitochondrial protein that is a member of the DJ-1/Pfpl gene family. This protein is overexpressed in fetal Down syndrome brain. Alternate splicing results in multiple transcript variants.

For Research Use Only

Thank you for your recent purchase.
If you would like to learn more about antibodies, please visit www.elabscience.com.

Focus on your research Service for life science

Applications:WB-Western Blot IHC-Immunohistochemistry IF-Immunofluorescence IP-Immunoprecipitation FC-Flow cytometry ChIP-Chromatin Immunoprecipitation Reactivity: H-Human R-Rat M-Mouse Mk-Monkey Dg-Dog Ch-Chicken Hm-Hamster Rb-Rabbit Sh-Sheep Pg-Pig Z-Zebrafish X-Xenopus C-Cow.