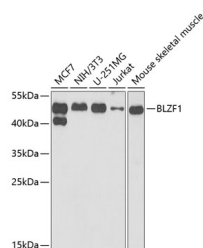


BLZF1 Polyclonal Antibody

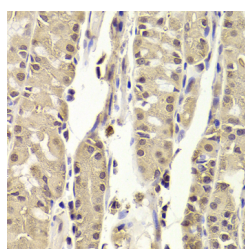
Catalog No.	E-AB-61957	Reactivity	H,M
Storage	Store at -20°C. Avoid freeze / thaw cycles.	Host	Rabbit
Applications	WB,IHC,IF	Isotype	IgG

Note: Centrifuge before opening to ensure complete recovery of vial contents.

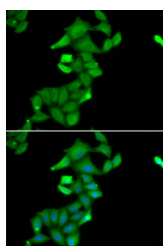
Images



Western blot analysis of extracts of various cell lines using BLZF1 Polyclonal Antibody at dilution of 1:1000.



Immunohistochemistry of paraffin-embedded Human stomach using BLZF1 Polyclonal Antibody at dilution of 1:100 (40x lens).



Immunofluorescence analysis of U2OS cells using BLZF1 Polyclonal Antibody

Immunogen Information

Immunogen	Recombinant fusion protein of human BLZF1 (NP_003657.1).
GeneID	8548
Swissprot	Q9H2G9
Synonyms	BLZF1,GOLGIN-45,JEM-1,JEM-1s,JEM1,golgin-45

Product Information

Calculated MW	19kDa/44kDa
Observed MW	45kDa
Buffer	PBS with 0.02% sodium azide, 50% glycerol, pH7.3.
Purify	Affinity purification
Dilution	WB 1:500-1:2000 IHC 1:50-1:200 IF 1:50-1:200

Background

BLZF1 (Basic Leucine Zipper Nuclear Factor 1) is a Protein Coding gene. Diseases associated with BLZF1 include Paraneoplastic Cerebellar Degeneration and Lissencephaly, X-Linked, 1. Among its related pathways are Mitotic Prophase and Cell Cycle, Mitotic. Gene Ontology (GO) annotations related to this gene include DNA-binding transcription factor activity and ubiquitin protein ligase binding.

For Research Use Only

Thank you for your recent purchase.
 If you would like to learn more about antibodies, please visit www.elabscience.com.

**Focus on your research
 Service for life science**

Applications:WB-Western Blot IHC-Immunohistochemistry IF-Immunofluorescence IP-Immunoprecipitation FC-Flow cytometry ChIP-Chromatin Immunoprecipitation Reactivity: H-Human R-Rat M-Mouse Mk-Monkey Dg-Dog Ch-Chicken Hm-Hamster Rb-Rabbit Sh-Sheep Pg-Pig Z-Zebrafish X-Xenopus C-Cow.