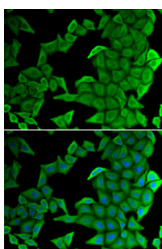


SMYD2 Polyclonal Antibody

Catalog No.	E-AB-61990	Reactivity	H,M
Storage	Store at -20°C. Avoid freeze / thaw cycles.	Host	Rabbit
Applications	IF	Isotype	IgG

Note: Centrifuge before opening to ensure complete recovery of vial contents.

Images



Immunofluorescence analysis of U2OS cells using SMYD2 Polyclonal Antibody

Immunogen Information

Immunogen	Recombinant fusion protein of human SMYD2 (NP_064582.2).
GeneID	56950
Swissprot	Q9NRG4
Synonyms	SMYD2, HSKM-B, KMT3C, ZMYND14

Product Information

Buffer	PBS with 0.02% sodium azide, 50% glycerol, pH7.3.
Purify	Affinity purification
Dilution	IF 1:10-1:100

Background

SMYD2 (SET And MYND Domain Containing 2) is a Protein Coding gene. Among its related pathways are Lysine degradation and PKMTs methylate histone lysines. Gene Ontology (GO) annotations related to this gene include p53 binding and protein-lysine N-methyltransferase activity. An important paralog of this gene is SMYD1.

For Research Use Only

Thank you for your recent purchase.
If you would like to learn more about antibodies, please visit www.elabscience.com.

Focus on your research Service for life science

Applications: WB-Western Blot IHC-Immunohistochemistry IF-Immunofluorescence IP-Immunoprecipitation FC-Flow cytometry ChIP-Chromatin Immunoprecipitation Reactivity: H-Human R-Rat M-Mouse Mk-Monkey Dg-Dog Ch-Chicken Hm-Hamster Rb-Rabbit Sh-Sheep Pg-Pig Z-Zebrafish X-Xenopus C-Cow.