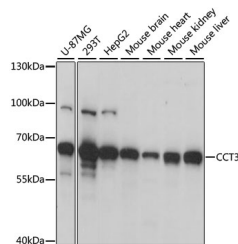


CCT3 Polyclonal Antibody

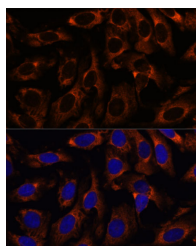
Catalog No.	E-AB-61205	Reactivity	H,M,R
Storage	Store at -20°C. Avoid freeze / thaw cycles.	Host	Rabbit
Applications	WB,IF	Isotype	IgG

Note: Centrifuge before opening to ensure complete recovery of vial contents.

Images



Western blot analysis of extracts of various cell lines using CCT3 Polyclonal Antibody at 1:1000 dilution.



Immunofluorescence analysis of U-2 OS cells using CCT3 Polyclonal Antibody at dilution of 1:100. Blue: DAPI for nuclear staining.

Immunogen Information

Immunogen	Recombinant fusion protein of human CCT3
GeneID	7203
Swissprot	P49368
Synonyms	CCT3,CCT-gamma,CCTG,PIG48,TCP-1-gamma,TRIC5

Product Information

Calculated MW	56kDa/60kDa
Observed MW	60kDa
Buffer	PBS with 0.02% sodium azide,50% glycerol,pH7.3.
Purify	Affinity purification
Dilution	WB 1:500-1:2000,IF 1:50-1:200

Background

The protein encoded by this gene is a molecular chaperone that is a member of the chaperonin containing TCP1 complex (CCT), also known as the TCP1 ring complex (TRiC). This complex consists of two identical stacked rings, each containing eight different proteins. Unfolded polypeptides enter the central cavity of the complex and are folded in an ATP-dependent manner. The complex folds various proteins, including actin and tubulin. Alternate transcriptional splice variants have been characterized for this gene. In addition, a pseudogene of this gene has been found on chromosome 8.

For Research Use Only

Thank you for your recent purchase.
 If you would like to learn more about antibodies, please visit www.elabscience.com.

**Focus on your research
 Service for life science**

Applications:WB-Western Blot IHC-Immunohistochemistry IF-Immunofluorescence IP-Immunoprecipitation FC-Flow cytometry ChIP-Chromatin Immunoprecipitation Reactivity: H-Human R-Rat M-Mouse Mk-Monkey Dg-Dog Ch-Chicken Hm-Hamster Rb-Rabbit Sh-Sheep Pg-Pig Z-Zebrafish X-Xenopus C-Cow.