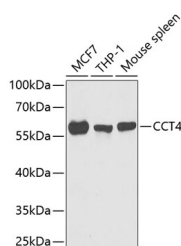


## CCT4 Polyclonal Antibody

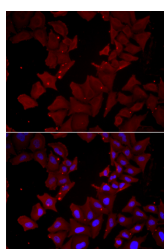
<b>Catalog No.</b>	E-AB-61206	<b>Reactivity</b>	H,M,R
<b>Storage</b>	Store at -20°C. Avoid freeze / thaw cycles.	<b>Host</b>	Rabbit
<b>Applications</b>	WB,IF	<b>Isotype</b>	IgG

**Note:** Centrifuge before opening to ensure complete recovery of vial contents.

### Images



Western blot analysis of extracts of various cell lines using CCT4 Polyclonal Antibody at 1:1000 dilution.



Immunofluorescence analysis of HeLa cells using CCT4 Polyclonal Antibody at dilution of 1:300 (40x lens). Blue: DAPI for nuclear staining.

### Immunogen Information

<b>Immunogen</b>	Recombinant fusion protein of human CCT4
<b>GeneID</b>	10575
<b>Swissprot</b>	P50991
<b>Synonyms</b>	CCT4,CCT-DELTA,Cctd,SRB

### Product Information

<b>Calculated MW</b>	54kDa/57kDa
<b>Observed MW</b>	60kDa
<b>Buffer</b>	PBS with 0.02% sodium azide,50% glycerol,pH7.3.
<b>Purify</b>	Affinity purification
<b>Dilution</b>	WB 1:500-1:2000,IF 1:50-1:200

### Background

The chaperonin containing TCP1 (MIM 186980) complex (CCT), also called the TCP1 ring complex, consists of 2 back-to-back rings, each containing 8 unique but homologous subunits, such as CCT4. CCT assists the folding of newly translated polypeptide substrates through multiple rounds of ATP-driven release and rebinding of partially folded intermediate forms. Substrates of CCT include the cytoskeletal proteins actin (see MIM 102560) and tubulin (see MIM 191130), as well as alpha-transducin (MIM 139330) (Won et al., 1998 [PubMed 9819444]).[supplied by OMIM, Mar 2008]

#### For Research Use Only

Thank you for your recent purchase.  
 If you would like to learn more about antibodies, please visit [www.elabscience.com](http://www.elabscience.com).

**Focus on your research  
 Service for life science**

Applications:WB-Western Blot IHC-Immunohistochemistry IF-Immunofluorescence IP-Immunoprecipitation FC-Flow cytometry ChIP-Chromatin Immunoprecipitation Reactivity: H-Human R-Rat M-Mouse Mk-Monkey Dg-Dog Ch-Chicken Hm-Hamster Rb-Rabbit Sh-Sheep Pg-Pig Z-Zebrafish X-Xenopus C-Cow.