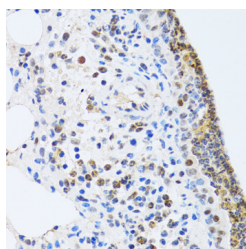


MTA3 Polyclonal Antibody

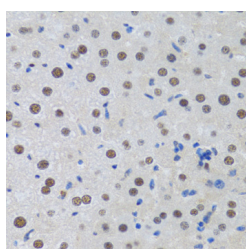
Catalog No.	E-AB-61279	Reactivity	H,M,R
Storage	Store at -20°C. Avoid freeze / thaw cycles.	Host	Rabbit
Applications	IHC	Isotype	IgG

Note: Centrifuge before opening to ensure complete recovery of vial contents.

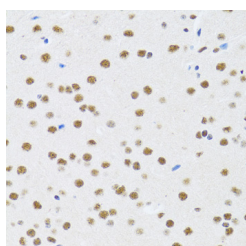
Images



Immunohistochemistry of paraffin-embedded Rat lung using MTA3 Polyclonal Antibody at dilution of 1:100 (40x lens).



Immunohistochemistry of paraffin-embedded Rat liver using MTA3 Polyclonal Antibody at dilution of 1:100 (40x lens).



Immunohistochemistry of paraffin-embedded Rat brain using MTA3 Polyclonal Antibody at dilution of 1:100 (40x lens).

Immunogen Information

Immunogen	Recombinant fusion protein of human MTA3 (NP_065795.1).
GeneID	57504
Swissprot	Q9BTC8
Synonyms	MTA3

Product Information

Buffer	PBS with 0.02% sodium azide, 50% glycerol, pH7.3.
Purify	Affinity purification
Dilution	IHC 1:50-1:200

Background

MTA3 (Metastasis Associated 1 Family Member 3) is a Protein Coding gene. Diseases associated with MTA3 include Gastroesophageal Junction Adenocarcinoma and Vertebral, Cardiac, Renal, And Limb Defects Syndrome 1. Among its related pathways are Preimplantation Embryo and Chromatin organization. Gene Ontology (GO) annotations related to this gene include DNA-binding transcription factor activity and chromatin binding. An important paralog of this gene is MTA1.

For Research Use Only

Thank you for your recent purchase.
If you would like to learn more about antibodies, please visit www.elabscience.com.

Focus on your research Service for life science

Applications: WB-Western Blot IHC-Immunohistochemistry IF-Immunofluorescence IP-Immunoprecipitation FC-Flow cytometry ChIP-Chromatin Immunoprecipitation Reactivity: H-Human R-Rat M-Mouse Mk-Monkey Dg-Dog Ch-Chicken Hm-Hamster Rb-Rabbit Sh-Sheep Pg-Pig Z-Zebrafish X-Xenopus C-Cow.