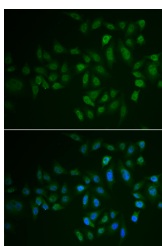


MYLK3 Polyclonal Antibody

Catalog No.	E-AB-61282	Reactivity	H,M
Storage	Store at -20°C. Avoid freeze / thaw cycles.	Host	Rabbit
Applications	IF	Isotype	IgG

Note: Centrifuge before opening to ensure complete recovery of vial contents.

Images



Immunofluorescence analysis of U2OS cells using MYLK3 Polyclonal Antibody

Immunogen Information

Immunogen	Recombinant fusion protein of human MYLK3 (NP_872299.2).
GeneID	91807
Swissprot	Q32MK0
Synonyms	MYLK3,MLCK,MLCK2,caMLCK

Product Information

Buffer	PBS with 0.02% sodium azide, 50% glycerol, pH7.3.
Purify	Affinity purification
Dilution	IF 1:50-1:100

Background

MYLK3 (Myosin Light Chain Kinase 3) is a Protein Coding gene. Diseases associated with MYLK3 include Hypoplastic Right Heart Syndrome and Dilated Cardiomyopathy. Among its related pathways are Focal Adhesion and Apelin signaling pathway. Gene Ontology (GO) annotations related to this gene include transferase activity, transferring phosphorus-containing groups and protein tyrosine kinase activity. An important paralog of this gene is MYLK2.

For Research Use Only

Thank you for your recent purchase.

If you would like to learn more about antibodies, please visit www.elabscience.com.

**Focus on your research
 Service for life science**

Applications:WB-Western Blot IHC-Immunohistochemistry IF-Immunofluorescence IP-Immunoprecipitation FC-Flow cytometry ChIP-Chromatin Immunoprecipitation Reactivity: H-Human R-Rat M-Mouse Mk-Monkey Dg-Dog Ch-Chicken Hm-Hamster Rb-Rabbit Sh-Sheep Pg-Pig Z-Zebrafish X-Xenopus C-Cow.