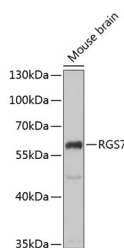


RGS7 Polyclonal Antibody

Catalog No.	E-AB-61321	Reactivity	H,M,R
Storage	Store at -20°C. Avoid freeze / thaw cycles.	Host	Rabbit
Applications	WB	Isotype	IgG

Note: Centrifuge before opening to ensure complete recovery of vial contents.

Images



Western blot analysis of extracts of Mouse brain using RGS7 Polyclonal Antibody at dilution of 1:1000.

Immunogen Information

Immunogen	Recombinant fusion protein of human RGS7 (NP_002915.3).
GeneID	6000
Swissprot	P49802
Synonyms	RGS7

Product Information

Calculated MW	49kDa/54kDa/55kDa/56kDa/57kDa
Observed MW	58kDa
Buffer	PBS with 0.02% sodium azide, 50% glycerol, pH7.3.
Purify	Affinity purification
Dilution	WB 1:500-1:2000

Background

RGS7 (Regulator Of G Protein Signaling 7) is a Protein Coding gene. Diseases associated with RGS7 include Prolonged Electroretinal Response Suppression and Congenital Stationary Night Blindness. Among its related pathways are Signaling by GPCR and Myometrial Relaxation and Contraction Pathways. Gene Ontology (GO) annotations related to this gene include obsolete signal transducer activity and G-protein beta-subunit binding. An important paralog of this gene is RGS6.

For Research Use Only

Thank you for your recent purchase.
 If you would like to learn more about antibodies, please visit www.elabscience.com.

**Focus on your research
 Service for life science**

Applications: WB-Western Blot IHC-Immunohistochemistry IF-Immunofluorescence IP-Immunoprecipitation FC-Flow cytometry ChIP-Chromatin Immunoprecipitation Reactivity: H-Human R-Rat M-Mouse Mk-Monkey Dg-Dog Ch-Chicken Hm-Hamster Rb-Rabbit Sh-Sheep Pg-Pig Z-Zebrafish X-Xenopus C-Cow.