

## SCYL1 Polyclonal Antibody

**Catalog No.** E-AB-61333

**Note:** Centrifuge before opening to ensure complete recovery of vial contents.

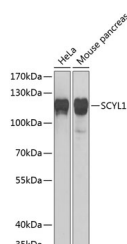
### Description

<b>Reactivity</b>	Human, Mouse, Rat
<b>Immunogen</b>	Recombinant fusion protein of human SCYL1 (NP_065731.3).
<b>Host</b>	Rabbit
<b>Isotype</b>	IgG
<b>Purification</b>	Affinity purification
<b>Conjugation</b>	Unconjugated
<b>Buffer</b>	PBS with 0.02% sodium azide, 50% glycerol, pH7.3.

### Applications Recommended Dilution

**WB 1:500-1:2000 IHC**  
**1:50-1:200 IF**  
**1:50-1:100**

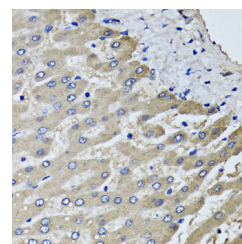
### Data



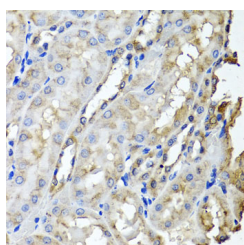
Western blot analysis of extracts of various cell lines using SCYL1 Polyclonal Antibody at dilution of 1:1000.

**Observed Mw:110kDa**  
**Calculated**

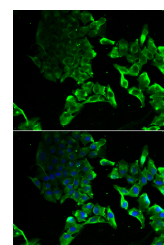
**Mw:69kDa/78kDa/86kDa/88kDa/89kDa**



Immunohistochemistry of paraffin-embedded Human liver damage using SCYL1 Polyclonal Antibody at dilution of 1:100 (40x lens).



Immunohistochemistry of paraffin-embedded Rat kidney using SCYL1 Polyclonal Antibody at dilution of 1:100 (40x lens).



Immunofluorescence analysis of MCF-7 cells using SCYL1 Polyclonal Antibody

### For Research Use Only

## Preparation & Storage

**Storage**                      Store at -20°C. Avoid freeze / thaw cycles.

## Background

This gene encodes a transcriptional regulator belonging to the SCY1-like family of kinase-like proteins. The protein has a divergent N-terminal kinase domain that is thought to be catalytically inactive, and can bind specific DNA sequences through its C-terminal domain. It activates transcription of the telomerase reverse transcriptase and DNA polymerase beta genes. The protein has been localized to the nucleus, and also to the cytoplasm and centrosomes during mitosis. Multiple transcript variants encoding different isoforms have been found for this gene.

## For Research Use Only