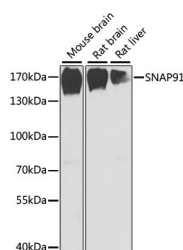


SNAP91 Polyclonal Antibody

Catalog No.	E-AB-61338	Reactivity	M,R
Storage	Store at -20°C. Avoid freeze / thaw cycles.	Host	Rabbit
Applications	WB	Isotype	IgG

Note: Centrifuge before opening to ensure complete recovery of vial contents.

Images



Western blot analysis of extracts of various cell lines using SNAP91 Polyclonal Antibody at dilution of 1:1000.

Immunogen Information

Immunogen	Recombinant fusion protein of human SNAP91 (NP_001229723.1).
GeneID	9892
Swissprot	O60641
Synonyms	SNAP91,AP180,CALM

Product Information

Calculated MW	6kDa/63kDa/89kDa/92kDa
Observed MW	180kDa
Buffer	PBS with 0.02% sodium azide, 50% glycerol, pH7.3.
Purify	Affinity purification
Dilution	WB 1:500-1:2000

Background

SNAP91 (Synaptosome Associated Protein 91) is a Protein Coding gene. Diseases associated with SNAP91 include Cataract 8, Multiple Types and Myopathy, Centronuclear, 2. Among its related pathways are Clathrin-mediated endocytosis and Vesicle-mediated transport. Gene Ontology (GO) annotations related to this gene include protein kinase binding and clathrin binding. An important paralog of this gene is PICALM.

For Research Use Only

Thank you for your recent purchase.

If you would like to learn more about antibodies, please visit www.elabscience.com.

**Focus on your research
 Service for life science**

Applications:WB-Western Blot IHC-Immunohistochemistry IF-Immunofluorescence IP-Immunoprecipitation FC-Flow cytometry ChIP-Chromatin Immunoprecipitation Reactivity: H-Human R-Rat M-Mouse Mk-Monkey Dg-Dog Ch-Chicken Hm-Hamster Rb-Rabbit Sh-Sheep Pg-Pig Z-Zebrafish X-Xenopus C-Cow.