

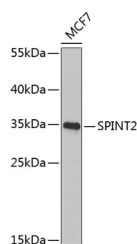
SPINT2 Polyclonal Antibody

Catalog No. E-AB-63044
Storage Store at -20°C. Avoid freeze / thaw cycles.
Applications WB,IF

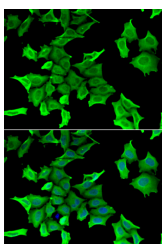
Reactivity H
Host Rabbit
Isotype IgG

Note: Centrifuge before opening to ensure complete recovery of vial contents.

Images



Western blot analysis of extracts of MCF-7 cells using SPINT2 Polyclonal Antibody at 1:1000 dilution.



Immunofluorescence analysis of HeLa cells using SPINT2 Polyclonal Antibody Blue: DAPI for nuclear staining.

Immunogen Information

Immunogen Recombinant fusion protein of human SPINT2
GeneID 10653
Swissprot O43291
Synonyms SPINT2,DIAR3,HAI-2,HAI2,Kop,PB

Product Information

Calculated MW 21kDa/28kDa
Observed MW 34kDa
Buffer PBS with 0.02% sodium azide,50% glycerol,pH7.3.
Purify Affinity purification
Dilution WB 1:500-1:2000,IF 1:50-1:100

Background

This gene encodes a transmembrane protein with two extracellular Kunitz domains that inhibits a variety of serine proteases. The protein inhibits HGF activator which prevents the formation of active hepatocyte growth factor. This gene is a putative tumor suppressor, and mutations in this gene result in congenital sodium diarrhea. Multiple transcript variants encoding different isoforms have been found for this gene.

For Research Use Only

Thank you for your recent purchase.
If you would like to learn more about antibodies, please visit www.elabscience.com.

Focus on your research Service for life science

Applications:WB-Western Blot IHC-Immunohistochemistry IF-Immunofluorescence IP-Immunoprecipitation FC-Flow cytometry ChIP-Chromatin Immunoprecipitation Reactivity: H-Human R-Rat M-Mouse Mk-Monkey Dg-Dog Ch-Chicken Hm-Hamster Rb-Rabbit Sh-Sheep Pg-Pig Z-Zebrafish X-Xenopus C-Cow.