

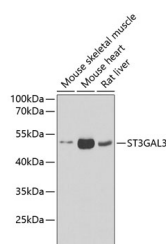
## ST3GAL3 Polyclonal Antibody

**Catalog No.** E-AB-61341  
**Storage** Store at -20°C. Avoid freeze / thaw cycles.  
**Applications** WB,IHC,IF

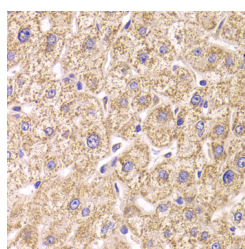
**Reactivity** H,M,R  
**Host** Rabbit  
**Isotype** IgG

**Note:** Centrifuge before opening to ensure complete recovery of vial contents.

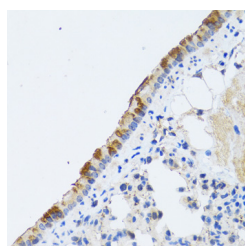
### Images



Western blot analysis of extracts of various cell lines using ST3GAL3 Polyclonal Antibody at dilution of 1:1000.



Immunohistochemistry of paraffin-embedded Human liver damage using ST3GAL3 Polyclonal Antibody at dilution of 1:100 (40x lens).



Immunohistochemistry of paraffin-embedded Rat lung using ST3GAL3 Polyclonal Antibody at dilution of 1:100 (40x lens).

### Immunogen Information

**Immunogen** Recombinant fusion protein of human ST3GAL3 (NP\_006270.1).  
**GeneID** 6487  
**Swissprot** Q11203  
**Synonyms** ST3GAL3,EIEE15,MRT12,SIAT6,ST3GALII,ST3Ga III,ST3N

### Product Information

**Calculated MW** 5kDa/8kDa/11-49kDa  
**Observed MW** 42kDa  
**Buffer** PBS with 0.02% sodium azide, 50% glycerol, pH7.3.  
**Purify** Affinity purification  
**Dilution** WB 1:500-1:2000 IHC 1:50-1:200 IF 1:50-1:200

### Background

The protein encoded by this gene is a type II membrane protein that catalyzes the transfer of sialic acid from CMP-sialic acid to galactose-containing substrates. The encoded protein is normally found in the Golgi apparatus but can be proteolytically processed to a soluble form. This protein is a member of glycosyltransferase family 29. Mutations in this gene have been associated with autosomal recessive nonsyndromic mental retardation-12 (MRT12). Multiple transcript variants encoding several different isoforms have been found for this gene.

### For Research Use Only

Thank you for your recent purchase.  
If you would like to learn more about antibodies, please visit [www.elabscience.com](http://www.elabscience.com).

### Focus on your research Service for life science

Applications:WB-Western Blot IHC-Immunohistochemistry IF-Immunofluorescence IP-Immunoprecipitation FC-Flow cytometry ChIP-Chromatin Immunoprecipitation Reactivity: H-Human R-Rat M-Mouse Mk-Monkey Dg-Dog Ch-Chicken Hm-Hamster Rb-Rabbit Sh-Sheep Pg-Pig Z-Zebrafish X-Xenopus C-Cow.