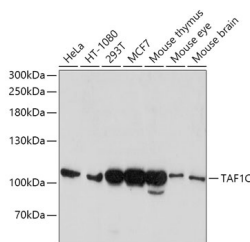


## TAF1C Polyclonal Antibody

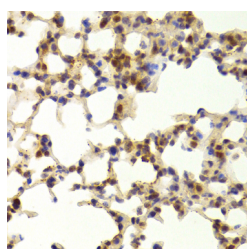
|                     |                                             |                   |        |
|---------------------|---------------------------------------------|-------------------|--------|
| <b>Catalog No.</b>  | E-AB-61345                                  | <b>Reactivity</b> | H,M,R  |
| <b>Storage</b>      | Store at -20°C. Avoid freeze / thaw cycles. | <b>Host</b>       | Rabbit |
| <b>Applications</b> | WB,IHC                                      | <b>Isotype</b>    | IgG    |

**Note:** Centrifuge before opening to ensure complete recovery of vial contents.

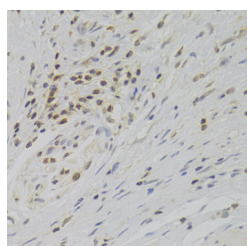
### Images



Western blot analysis of extracts of various cell lines using TAF1C Polyclonal Antibody at dilution of 1:1000.



Immunohistochemistry of paraffin-embedded Mouse lung using TAF1C Polyclonal Antibody at dilution of 1:100 (40x lens).



Immunohistochemistry of paraffin-embedded Human gastric cancer using TAF1C Polyclonal Antibody at dilution of 1:100 (40x lens).

### Immunogen Information

|                  |                                                             |
|------------------|-------------------------------------------------------------|
| <b>Immunogen</b> | Recombinant fusion protein of human TAF1C (NP_001230085.1). |
| <b>GeneID</b>    | 9013                                                        |
| <b>Swissprot</b> | Q15572                                                      |
| <b>Synonyms</b>  | TAF1C,MGC:39976,SL1,TAFI110,TAFI95                          |

### Product Information

|                      |                                                   |
|----------------------|---------------------------------------------------|
| <b>Calculated MW</b> | 49kDa/58kDa/84kDa/92kDa/95kDa                     |
| <b>Observed MW</b>   | 110kDa                                            |
| <b>Buffer</b>        | PBS with 0.02% sodium azide, 50% glycerol, pH7.3. |
| <b>Purify</b>        | Affinity purification                             |
| <b>Dilution</b>      | WB 1:500-1:2000 IHC 1:50-1:200                    |

### Background

Initiation of transcription by RNA polymerase I requires the formation of a complex composed of the TATA-binding protein (TBP) and three TBP-associated factors (TAFs) specific for RNA polymerase I. This complex, known as SL1, binds to the core promoter of ribosomal RNA genes to position the polymerase properly and acts as a channel for regulatory signals. This gene encodes the largest SL1-specific TAF. Multiple alternatively spliced transcript variants encoding different isoforms have been identified.

#### For Research Use Only

Thank you for your recent purchase.  
 If you would like to learn more about antibodies, please visit [www.elabscience.com](http://www.elabscience.com).

**Focus on your research  
 Service for life science**

Applications:WB-Western Blot IHC-Immunohistochemistry IF-Immunofluorescence IP-Immunoprecipitation FC-Flow cytometry ChIP-Chromatin Immunoprecipitation Reactivity: H-Human R-Rat M-Mouse Mk-Monkey Dg-Dog Ch-Chicken Hm-Hamster Rb-Rabbit Sh-Sheep Pg-Pig Z-Zebrafish X-Xenopus C-Cow.