

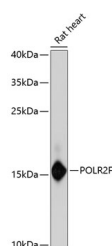
POLR2F Polyclonal Antibody

Catalog No. E-AB-65542
Storage Store at -20°C. Avoid freeze / thaw cycles.
Applications WB

Reactivity H,R
Host Rabbit
Isotype IgG

Note: Centrifuge before opening to ensure complete recovery of vial contents.

Images



Western blot analysis of extracts of Rat heart using POLR2F Polyclonal Antibody at dilution of 1:3000.

Immunogen Information

Immunogen Recombinant fusion protein of human POLR2F (NP_068809.1).
GeneID 5435
Swissprot P61218
Synonyms POLR2F,HRBP14.4,POLRF,RPABC14.4,RPABC2,RPB14.4,RPB6,RPC15

Product Information

Calculated MW 14kDa
Observed MW 14kDa
Buffer PBS with 0.02% sodium azide, 50% glycerol, pH7.3.
Purify Affinity purification
Dilution WB 1:500-1:2000

Background

This gene encodes the sixth largest subunit of RNA polymerase II, the polymerase responsible for synthesizing messenger RNA in eukaryotes. In yeast, this polymerase subunit, in combination with at least two other subunits, forms a structure that stabilizes the transcribing polymerase on the DNA template. Alternative splicing results in multiple transcript variants.

For Research Use Only

Thank you for your recent purchase.
If you would like to learn more about antibodies, please visit www.elabscience.com.

Focus on your research Service for life science

Applications:WB-Western Blot IHC-Immunohistochemistry IF-Immunofluorescence IP-Immunoprecipitation FC-Flow cytometry ChIP-Chromatin Immunoprecipitation Reactivity: H-Human R-Rat M-Mouse Mk-Monkey Dg-Dog Ch-Chicken Hm-Hamster Rb-Rabbit Sh-Sheep Pg-Pig Z-Zebrafish X-Xenopus C-Cow.