

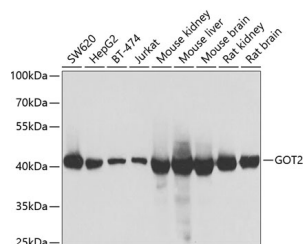
## GOT2 Polyclonal Antibody

**Catalog No.** E-AB-61401  
**Storage** Store at -20°C. Avoid freeze / thaw cycles.  
**Applications** WB,IHC

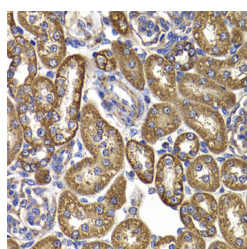
**Reactivity** H,M,R  
**Host** Rabbit  
**Isotype** IgG

**Note:** Centrifuge before opening to ensure complete recovery of vial contents.

### Images



Western blot analysis of extracts of various cell lines using GOT2 Polyclonal Antibody at dilution of 1:1000.



Immunohistochemistry of paraffin-embedded Rat kidney using GOT2 Polyclonal Antibody at dilution of 1:100 (40x lens).

### Immunogen Information

**Immunogen** Recombinant fusion protein of human GOT2 (NP\_002071.2).  
**GeneID** 2806  
**Swissprot** P00505  
**Synonyms** GOT2,KAT4,KATIV,KYAT4,mitAAT

### Product Information

**Calculated MW** 43kDa/47kDa  
**Observed MW** 48kDa  
**Buffer** PBS with 0.02% sodium azide, 50% glycerol, pH7.3.  
**Purify** Affinity purification  
**Dilution** WB 1:500-1:2000 IHC 1:50-1:200

### Background

Glutamic-oxaloacetic transaminase is a pyridoxal phosphate-dependent enzyme which exists in cytoplasmic and inner-membrane mitochondrial forms, GOT1 and GOT2, respectively. GOT plays a role in amino acid metabolism and the urea and tricarboxylic acid cycles. The two enzymes are homodimeric and show close homology. Two transcript variants encoding different isoforms have been found for this gene.

### For Research Use Only

Thank you for your recent purchase.  
If you would like to learn more about antibodies, please visit [www.elabscience.com](http://www.elabscience.com).

### Focus on your research Service for life science

Applications:WB-Western Blot IHC-Immunohistochemistry IF-Immunofluorescence IP-Immunoprecipitation FC-Flow cytometry ChIP-Chromatin Immunoprecipitation Reactivity: H-Human R-Rat M-Mouse Mk-Monkey Dg-Dog Ch-Chicken Hm-Hamster Rb-Rabbit Sh-Sheep Pg-Pig Z-Zebrafish X-Xenopus C-Cow.