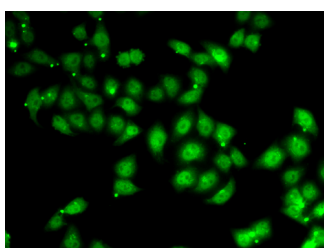


## AFF1 Polyclonal Antibody

<b>Catalog No.</b>	E-AB-61412	<b>Reactivity</b>	H,R
<b>Storage</b>	Store at -20°C. Avoid freeze / thaw cycles.	<b>Host</b>	Rabbit
<b>Applications</b>	IF	<b>Isotype</b>	IgG

**Note:** Centrifuge before opening to ensure complete recovery of vial contents.

### Images



Immunofluorescence analysis of U2OS cells using AFF1 Polyclonal Antibody

### Immunogen Information

<b>Immunogen</b>	Recombinant fusion protein of human AFF1 (NP_001160165.1).
<b>GeneID</b>	4299
<b>Swissprot</b>	P51825
<b>Synonyms</b>	AFF1,AF4,MLLT2,PBM1

### Product Information

<b>Buffer</b>	PBS with 0.02% sodium azide, 50% glycerol, pH7.3.
<b>Purify</b>	Affinity purification
<b>Dilution</b>	IF 1:50-1:100

### Background

This gene encodes a member of the AF4/ lymphoid nuclear protein related to AF4/Fragile X E mental retardation syndrome family of proteins, which have been implicated in childhood lymphoblastic leukemia, Fragile X E site mental retardation, and ataxia. It is the prevalent mixed-lineage leukemia fusion gene associated with spontaneous acute lymphoblastic leukemia. Members of this family have three conserved domains: an N-terminal homology domain, an AF4/ lymphoid nuclear protein related to AF4/Fragile X E mental retardation syndrome domain, and a C-terminal homology domain. The protein functions as a regulator of RNA polymerase II-mediated transcription through elongation and chromatin remodeling functions. Through RNA interference screens, this gene has been shown to promote the expression of CD133, a plasma membrane glycoprotein required for leukemia cell survival. Alternative splicing results in multiple transcript variants.

#### For Research Use Only

Thank you for your recent purchase.  
 If you would like to learn more about antibodies, please visit [www.elabscience.com](http://www.elabscience.com).

**Focus on your research  
 Service for life science**

Applications:WB-Western Blot IHC-Immunohistochemistry IF-Immunofluorescence IP-Immunoprecipitation FC-Flow cytometry ChIP-Chromatin Immunoprecipitation Reactivity: H-Human R-Rat M-Mouse Mk-Monkey Dg-Dog Ch-Chicken Hm-Hamster Rb-Rabbit Sh-Sheep Pg-Pig Z-Zebrafish X-Xenopus C-Cow.