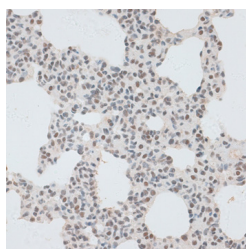


ZNF148 Polyclonal Antibody

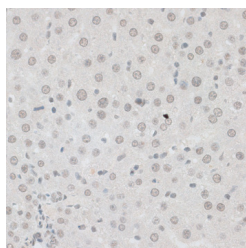
Catalog No.	E-AB-61458	Reactivity	H,M,R
Storage	Store at -20°C. Avoid freeze / thaw cycles.	Host	Rabbit
Applications	IHC,IF	Isotype	IgG

Note: Centrifuge before opening to ensure complete recovery of vial contents.

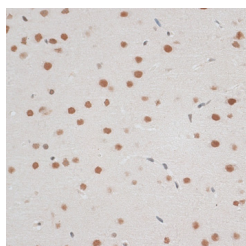
Images



Immunohistochemistry of paraffin-embedded Rat lung using ZNF148 Polyclonal Antibody at dilution of 1:100 (40x lens).



Immunohistochemistry of paraffin-embedded Rat liver using ZNF148 Polyclonal Antibody at dilution of 1:100 (40x lens).



Immunohistochemistry of paraffin-embedded Rat brain using ZNF148 Polyclonal Antibody at dilution of 1:100 (40x lens).

Immunogen Information

Immunogen	Recombinant fusion protein of human ZNF148 (NP_068799.2).
GeneID	7707
Swissprot	Q9UQR1
Synonyms	ZNF148, BERF-1, BFCOL1, GDACCF, HT-BETA, ZBP-89, ZFP148, pHZ-52

Product Information

Buffer	PBS with 0.02% sodium azide, 50% glycerol, pH7.3.
Purify	Affinity purification
Dilution	IHC 1:50-1:100 IF 1:20-1:100

Background

The protein encoded by this gene is a member of the Kruppel family of zinc finger DNA binding proteins. The encoded protein activates transcription of the T-cell receptor and intestinal alkaline phosphatase genes but represses transcription of the ornithine decarboxylase, vimentin, gastrin, stomelysin, and enolase genes. Increased expression of this gene results in decreased patient survival rates from colorectal cancer, while mutations in this gene have been associated with global developmental delay, hypoplastic corpus callosum, and dysmorphic facies.

For Research Use Only

Thank you for your recent purchase.
If you would like to learn more about antibodies, please visit www.elabscience.com.

Focus on your research Service for life science

Applications: WB-Western Blot IHC-Immunohistochemistry IF-Immunofluorescence IP-Immunoprecipitation FC-Flow cytometry ChIP-Chromatin Immunoprecipitation Reactivity: H-Human R-Rat M-Mouse Mk-Monkey Dg-Dog Ch-Chicken Hm-Hamster Rb-Rabbit Sh-Sheep Pg-Pig Z-Zebrafish X-Xenopus C-Cow.