

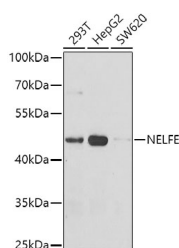
## NELFE Polyclonal Antibody

**Catalog No.** E-AB-61462  
**Storage** Store at -20°C. Avoid freeze / thaw cycles.  
**Applications** WB,IF

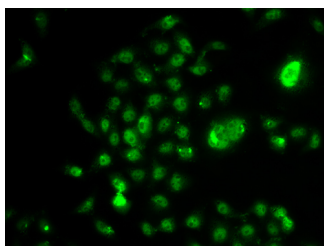
**Reactivity** H  
**Host** Rabbit  
**Isotype** IgG

**Note:** Centrifuge before opening to ensure complete recovery of vial contents.

### Images



Western blot analysis of extracts of various cell lines using NELFE Polyclonal Antibody at dilution of 1:1000.



Immunofluorescence analysis of U2OS cells using NELFE Polyclonal Antibody

### Immunogen Information

**Immunogen** Recombinant fusion protein of human NELFE (NP\_002895.3).  
**GeneID** 7936  
**Swissprot** P18615  
**Synonyms** NELFE,D6S45,NELF-E,RD,RDBP,RDP

### Product Information

**Calculated MW** 40kDa/43kDa  
**Observed MW** 43kDa  
**Buffer** PBS with 0.02% sodium azide, 50% glycerol, pH7.3.  
**Purify** Affinity purification  
**Dilution** WB 1:500-1:2000 IF 1:50-1:100

### Background

The protein encoded by this gene is part of a complex termed negative elongation factor (NELF) which represses RNA polymerase II transcript elongation. This protein bears similarity to nuclear RNA-binding proteins; however, it has not been demonstrated that this protein binds RNA. The protein contains a tract of alternating basic and acidic residues, largely arginine (R) and aspartic acid (D). The gene localizes to the major histocompatibility complex (MHC) class III region on chromosome 6.

### For Research Use Only

Thank you for your recent purchase.  
If you would like to learn more about antibodies, please visit [www.elabscience.com](http://www.elabscience.com).

### Focus on your research Service for life science

Applications:WB-Western Blot IHC-Immunohistochemistry IF-Immunofluorescence IP-Immunoprecipitation FC-Flow cytometry ChIP-Chromatin Immunoprecipitation Reactivity: H-Human R-Rat M-Mouse Mk-Monkey Dg-Dog Ch-Chicken Hm-Hamster Rb-Rabbit Sh-Sheep Pg-Pig Z-Zebrafish X-Xenopus C-Cow.