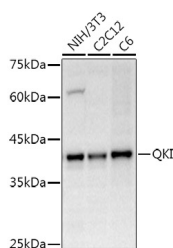


QKI Polyclonal Antibody

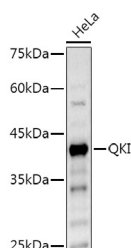
Catalog No.	E-AB-61487	Reactivity	H,M,R
Storage	Store at -20°C. Avoid freeze / thaw cycles.	Host	Rabbit
Applications	WB,IF	Isotype	IgG

Note: Centrifuge before opening to ensure complete recovery of vial contents.

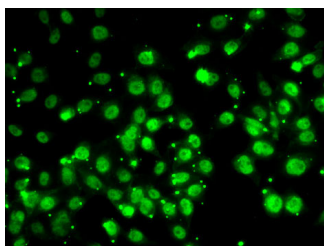
Images



Western blot analysis of extracts of various cell lines using QKI Polyclonal Antibody at 1:500 dilution.



Western blot analysis of extracts of HeLa cells using QKI Polyclonal Antibody at 1:500 dilution.



Immunofluorescence analysis of MCF7 cells using QKI Polyclonal antibody.

Immunogen Information

Immunogen	Recombinant fusion protein of human QKI
GeneID	9444
Swissprot	Q96PU8
Synonyms	QKI,Hqk,QQ,QK1,QK3,hqk1

Product Information

Calculated MW	35kDa/36kDa/37kDa
Observed MW	38KDa
Buffer	PBS with 0.05% proclin300,50% glycerol,pH7.3.
Purify	Affinity purification
Dilution	WB 1:500-1:2000,IF 1:50-1:200

Background

The protein encoded by this gene is an RNA-binding protein that regulates pre-mRNA splicing, export of mRNAs from the nucleus, protein translation, and mRNA stability. The encoded protein is involved in myelination and oligodendrocyte differentiation and may play a role in schizophrenia. Multiple transcript variants encoding different isoforms have been found for this gene.

For Research Use Only

Thank you for your recent purchase.
 If you would like to learn more about antibodies, please visit www.elabscience.com.

**Focus on your research
 Service for life science**

Applications:WB-Western Blot IHC-Immunohistochemistry IF-Immunofluorescence IP-Immunoprecipitation FC-Flow cytometry ChIP-Chromatin Immunoprecipitation Reactivity: H-Human R-Rat M-Mouse Mk-Monkey Dg-Dog Ch-Chicken Hm-Hamster Rb-Rabbit Sh-Sheep Pg-Pig Z-Zebrafish X-Xenopus C-Cow.