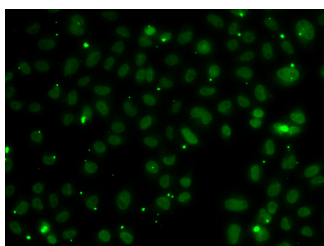


NSL1 Polyclonal Antibody

Catalog No.	E-AB-62407	Reactivity	H
Storage	Store at -20°C. Avoid freeze / thaw cycles.	Host	Rabbit
Applications	IF	Isotype	IgG

Note: Centrifuge before opening to ensure complete recovery of vial contents.

Images



Immunofluorescence analysis of A549 cells using NSL1 Polyclonal Antibody

Immunogen Information

Immunogen	Recombinant fusion protein of human NSL1 (NP_056286.3).
GeneID	25936
Swissprot	Q96IY1
Synonyms	NSL1,C1orf48,DC8,MIS14

Product Information

Buffer	PBS with 0.02% sodium azide, 50% glycerol, pH7.3.
Purify	Affinity purification
Dilution	IF 1:50-1:100

Background

This gene encodes a protein with two coiled-coil domains that localizes to kinetochores, which are chromosome-associated structures that attach to microtubules and mediate chromosome movements during cell division. The encoded protein is part of a conserved protein complex that includes two chromodomain-containing proteins and a component of the outer plate of the kinetochore. This protein complex is proposed to bridge centromeric heterochromatin with the outer kinetochore structure. Multiple transcript variants encoding different isoforms have been found for this gene. There is a pseudogene of the 3' UTR region of this gene on chromosome X.

For Research Use Only

Thank you for your recent purchase.
 If you would like to learn more about antibodies, please visit www.elabscience.com.

**Focus on your research
 Service for life science**

Applications: WB-Western Blot IHC-Immunohistochemistry IF-Immunofluorescence IP-Immunoprecipitation FC-Flow cytometry ChIP-Chromatin Immunoprecipitation Reactivity: H-Human R-Rat M-Mouse Mk-Monkey Dg-Dog Ch-Chicken Hm-Hamster Rb-Rabbit Sh-Sheep Pg-Pig Z-Zebrafish X-Xenopus C-Cow.