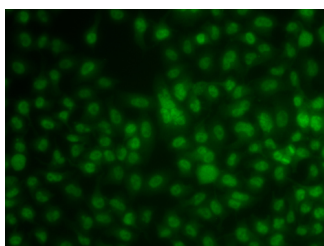


KLF3 Polyclonal Antibody

Catalog No.	E-AB-61577	Reactivity	H
Storage	Store at -20°C. Avoid freeze / thaw cycles.	Host	Rabbit
Applications	IF	Isotype	IgG

Note: Centrifuge before opening to ensure complete recovery of vial contents.

Images



Immunofluorescence analysis of A549 cells using KLF3 Polyclonal Antibody

Immunogen Information

Immunogen	Recombinant fusion protein of human KLF3 (NP_057615.3).
GeneID	51274
Swissprot	P57682
Synonyms	KLF3,BKLF

Product Information

Buffer	PBS with 0.02% sodium azide, 50% glycerol, pH7.3.
Purify	Affinity purification
Dilution	IF 1:50-1:100

Background

KLF3 (Kruppel Like Factor 3) is a Protein Coding gene. Among its related pathways are Transcriptional misregulation in cancer. Gene Ontology (GO) annotations related to this gene include DNA-binding transcription factor activity. An important paralog of this gene is KLF12.

For Research Use Only

Thank you for your recent purchase.
If you would like to learn more about antibodies, please visit www.elabscience.com.

Focus on your research Service for life science

Applications: WB-Western Blot IHC-Immunohistochemistry IF-Immunofluorescence IP-Immunoprecipitation FC-Flow cytometry ChIP-Chromatin Immunoprecipitation Reactivity: H-Human R-Rat M-Mouse Mk-Monkey Dg-Dog Ch-Chicken Hm-Hamster Rb-Rabbit Sh-Sheep Pg-Pig Z-Zebrafish X-Xenopus C-Cow.