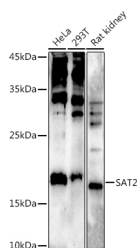


SAT2 Polyclonal Antibody

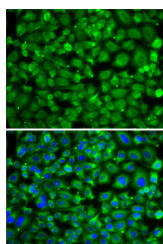
Catalog No.	E-AB-61588	Reactivity	H,R
Storage	Store at -20°C. Avoid freeze / thaw cycles.	Host	Rabbit
Applications	WB,IF	Isotype	IgG

Note: Centrifuge before opening to ensure complete recovery of vial contents.

Images



Western blot analysis of extracts of various cell lines using SAT2 Polyclonal Antibody at 1:500 dilution.



Immunofluorescence analysis of A-549 cells using SAT2 Polyclonal Antibody Blue: DAPI for nuclear staining.

Immunogen Information

Immunogen	Recombinant fusion protein of human SAT2
GeneID	112483
Swissprot	Q96F10
Synonyms	SAT2,SSAT2

Product Information

Calculated MW	19kDa
Observed MW	19KDa
Buffer	PBS with 0.02% sodium azide,50% glycerol,pH7.3.
Purify	Affinity purification
Dilution	WB 1:500-1:2000,IF 1:50-1:100

Background

Catalyzes the N-acetylation of the amino acid thialysine (S-(2-aminoethyl)-L-cysteine, a L-lysine analog with the 4-methylene group substituted with a sulfur. May also catalyze acetylation of polyamines, such as norspermidine, spermidine or spermine. However, ability to acetylate polyamines is weak, suggesting that it does not act as a diamine acetyltransferase in vivo.

For Research Use Only

Thank you for your recent purchase.
 If you would like to learn more about antibodies, please visit www.elabscience.com.

**Focus on your research
 Service for life science**

Applications:WB-Western Blot IHC-Immunohistochemistry IF-Immunofluorescence IP-Immunoprecipitation FC-Flow cytometry ChIP-Chromatin Immunoprecipitation Reactivity: H-Human R-Rat M-Mouse Mk-Monkey Dg-Dog Ch-Chicken Hm-Hamster Rb-Rabbit Sh-Sheep Pg-Pig Z-Zebrafish X-Xenopus C-Cow.