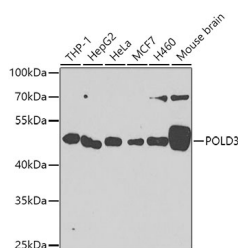


POLD3 Polyclonal Antibody

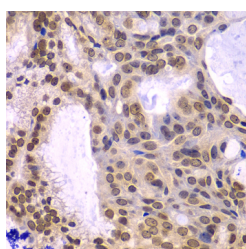
Catalog No.	E-AB-61602	Reactivity	H,M
Storage	Store at -20°C. Avoid freeze / thaw cycles.	Host	Rabbit
Applications	WB,IHC,IF	Isotype	IgG

Note: Centrifuge before opening to ensure complete recovery of vial contents.

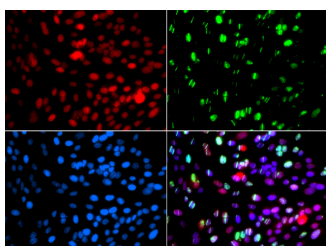
Images



Western blot analysis of extracts of various cell lines using POLD3 Polyclonal Antibody at dilution of 1:1000.



Immunohistochemistry of paraffin-embedded Human oophoroma using POLD3 Polyclonal Antibody at dilution of 1:100 (40x lens).



Immunofluorescence analysis of GFP-RNF168 transgenic U2OS cells using POLD3 Polyclonal Antibody

Immunogen Information

Immunogen	Recombinant fusion protein of human POLD3 (NP_006582.1).
GeneID	10714
Swissprot	Q15054
Synonyms	POLD3,P66,P68,PPP1R128

Product Information

Calculated MW	39kDa/46kDa/51kDa
Observed MW	51kDa
Buffer	PBS with 0.02% sodium azide, 50% glycerol, pH7.3.
Purify	Affinity purification
Dilution	WB 1:500-1:2000 IHC 1:50-1:200 IF 1:50-1:100

Background

This gene encodes the 66-kDa subunit of DNA polymerase delta. DNA polymerase delta possesses both polymerase and 3' to 5' exonuclease activity and plays a critical role in DNA replication and repair. The encoded protein plays a role in regulating the activity of DNA polymerase delta through interactions with other subunits and the processivity cofactor proliferating cell nuclear antigen (PCNA). Alternatively spliced transcript variants have been observed for this gene.

For Research Use Only

Thank you for your recent purchase.
 If you would like to learn more about antibodies, please visit www.elabscience.com.

Focus on your research
Service for life science

Applications:WB-Western Blot IHC-Immunohistochemistry IF-Immunofluorescence IP-Immunoprecipitation FC-Flow cytometry ChIP-Chromatin Immunoprecipitation Reactivity: H-Human R-Rat M-Mouse Mk-Monkey Dg-Dog Ch-Chicken Hm-Hamster Rb-Rabbit Sh-Sheep Pg-Pig Z-Zebrafish X-Xenopus C-Cow.