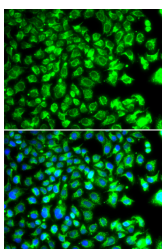


C10orf32 Polyclonal Antibody

Catalog No.	E-AB-61613	Reactivity	H
Storage	Store at -20°C. Avoid freeze / thaw cycles.	Host	Rabbit
Applications	IF	Isotype	IgG

Note: Centrifuge before opening to ensure complete recovery of vial contents.

Images



Immunofluorescence analysis of MCF-7 cells using C10orf32 Polyclonal Antibody

Immunogen Information

Immunogen	Recombinant fusion protein of human C10orf32 (NP_653192.2).
GeneID	119032
Swissprot	Q96B45
Synonyms	BORCS7,C10orf32

Product Information

Buffer	PBS with 0.02% sodium azide, 50% glycerol, pH7.3.
Purify	Affinity purification
Dilution	IF 1:50-1:100

Background

BORCS7 (BLOC-1 Related Complex Subunit 7) is a Protein Coding gene. Diseases associated with BORCS7 include Leopard Syndrome 1 and Breast Apocrine Carcinoma. An important paralog of this gene is BORCS7-ASMT.

For Research Use Only

Thank you for your recent purchase.

If you would like to learn more about antibodies, please visit www.elabscience.com.

**Focus on your research
 Service for life science**

Applications: WB-Western Blot IHC-Immunohistochemistry IF-Immunofluorescence IP-Immunoprecipitation FC-Flow cytometry ChIP-Chromatin Immunoprecipitation Reactivity: H-Human R-Rat M-Mouse Mk-Monkey Dg-Dog Ch-Chicken Hm-Hamster Rb-Rabbit Sh-Sheep Pg-Pig Z-Zebrafish X-Xenopus C-Cow.