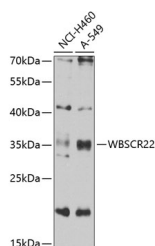


WBSCR22 Polyclonal Antibody

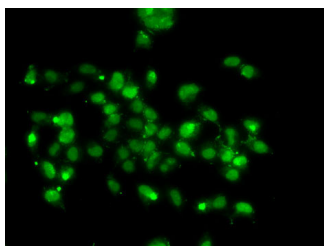
Catalog No.	E-AB-61645	Reactivity	H,R
Storage	Store at -20°C. Avoid freeze / thaw cycles.	Host	Rabbit
Applications	WB,IF	Isotype	IgG

Note: Centrifuge before opening to ensure complete recovery of vial contents.

Images



Western blot analysis of extracts of various cell lines using WBSCR22 Polyclonal Antibody at 1:1000 dilution.



Immunofluorescence analysis of A-549 cells using WBSCR22 Polyclonal Antibody

Immunogen Information

Immunogen	Recombinant fusion protein of human WBSCR22
GeneID	114049
Swissprot	O43709
Synonyms	BUD23,HASJ4442,HUSSY-3,MERM1,PP3381,WB MT,WBSCR22

Product Information

Calculated MW	24kDa/31kDa/33kDa
Observed MW	36kDa
Buffer	PBS with 0.02% sodium azide,50% glycerol,pH7.3.
Purify	Affinity purification
Dilution	WB 1:500-1:2000,IF 1:50-1:100

Background

This gene encodes a protein containing a nuclear localization signal and an S-adenosyl-L-methionine binding motif typical of methyltransferases, suggesting that the encoded protein may act on DNA methylation. This gene is deleted in Williams syndrome, a multisystem developmental disorder caused by the deletion of contiguous genes at 7q11.23. Alternatively spliced transcript variants have been found.

For Research Use Only

Thank you for your recent purchase.
If you would like to learn more about antibodies, please visit www.elabscience.com.

Focus on your research Service for life science

Applications:WB-Western Blot IHC-Immunohistochemistry IF-Immunofluorescence IP-Immunoprecipitation FC-Flow cytometry ChIP-Chromatin Immunoprecipitation Reactivity: H-Human R-Rat M-Mouse Mk-Monkey Dg-Dog Ch-Chicken Hm-Hamster Rb-Rabbit Sh-Sheep Pg-Pig Z-Zebrafish X-Xenopus C-Cow.