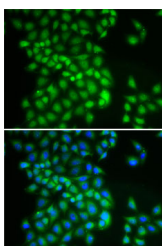


## YTHDC1 Polyclonal Antibody

<b>Catalog No.</b>	E-AB-62555	<b>Reactivity</b>	H,M,R
<b>Storage</b>	Store at -20°C. Avoid freeze / thaw cycles.	<b>Host</b>	Rabbit
<b>Applications</b>	IF	<b>Isotype</b>	IgG

**Note:** Centrifuge before opening to ensure complete recovery of vial contents.

### Images



Immunofluorescence analysis of A-549 cells using YTHDC1 Polyclonal Antibody

### Immunogen Information

<b>Immunogen</b>	Recombinant fusion protein of human YTHDC1 (NP_001026902.1).
<b>GeneID</b>	91746
<b>Swissprot</b>	Q96MU7
<b>Synonyms</b>	YTHDC1, YT521, YT521-B

### Product Information

<b>Buffer</b>	PBS with 0.02% sodium azide, 50% glycerol, pH7.3.
<b>Purify</b>	Affinity purification
<b>Dilution</b>	IF 1:50-1:100

### Background

YTHDC1 (YTH Domain Containing 1) is a Protein Coding gene. Diseases associated with YTHDC1 include Periosteal Chondrosarcoma and Wilms Tumor 1. Among its related pathways are Chromatin Regulation / Acetylation. Gene Ontology (GO) annotations related to this gene include N6-methyladenosine-containing RNA binding. An important paralog of this gene is YTHDF1.

#### For Research Use Only

Thank you for your recent purchase.

If you would like to learn more about antibodies, please visit [www.elabscience.com](http://www.elabscience.com).

**Focus on your research  
 Service for life science**

Applications: WB-Western Blot IHC-Immunohistochemistry IF-Immunofluorescence IP-Immunoprecipitation FC-Flow cytometry ChIP-Chromatin Immunoprecipitation Reactivity: H-Human R-Rat M-Mouse Mk-Monkey Dg-Dog Ch-Chicken Hm-Hamster Rb-Rabbit Sh-Sheep Pg-Pig Z-Zebrafish X-Xenopus C-Cow.