

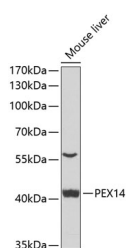
PEX14 Polyclonal Antibody

Catalog No. E-AB-62862
Storage Store at -20°C. Avoid freeze / thaw cycles.
Applications WB,IHC

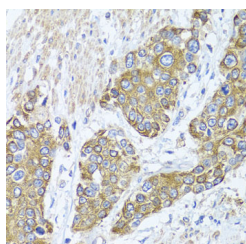
Reactivity H,M
Host Rabbit
Isotype IgG

Note: Centrifuge before opening to ensure complete recovery of vial contents.

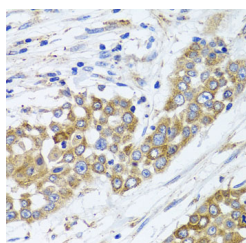
Images



Western blot analysis of extracts of mouse liver using PEX14 Polyclonal Antibody at 1:1000 dilution.



Immunohistochemistry of paraffin-embedded human prostate cancer using PEX14 Polyclonal Antibody at dilution of 1:100 (40x lens). Perform microwave antigen retrieval with 10 mM PBS buffer pH 7.2 before commencing with IHC staining protocol.



Immunohistochemistry of paraffin-embedded human colon carcinoma using PEX14 Polyclonal antibody at dilution of 1:100 (40x lens). Perform microwave antigen retrieval with 10

Immunogen Information

Immunogen Recombinant fusion protein of human PEX14
GeneID 5195
Swissprot O75381
Synonyms PEX14,NAPP2,PBD13A,Pex14p,dJ734G22.2

Product Information

Calculated MW 36kDa/41kDa
Observed MW 41kDa
Buffer PBS with 0.02% sodium azide, 50% glycerol, pH 7.3.
Purify Affinity purification
Dilution WB 1:500-1:2000, IHC 1:50-1:200

Background

This gene encodes an essential component of the peroxisomal import machinery. The protein is integrated into peroxisome membranes with its C-terminus exposed to the cytosol, and interacts with the cytosolic receptor for proteins containing a PTS1 peroxisomal targeting signal. The protein also functions as a transcriptional corepressor and interacts with a histone deacetylase. A mutation in this gene results in one form of Zellweger syndrome.

For Research Use Only

Thank you for your recent purchase.
If you would like to learn more about antibodies, please visit www.elabscience.com.

Focus on your research
Service for life science

Applications: WB-Western Blot IHC-Immunohistochemistry IF-Immunofluorescence IP-Immunoprecipitation FC-Flow cytometry ChIP-Chromatin Immunoprecipitation Reactivity: H-Human R-Rat M-Mouse Mk-Monkey Dg-Dog Ch-Chicken Hm-Hamster Rb-Rabbit Sh-Sheep Pg-Pig Z-Zebrafish X-Xenopus C-Cow.

mM PBS buffer pH 7.2 before
commencing with IHC staining
protocol.

For Research Use Only

Thank you for your recent purchase.

If you would like to learn more about antibodies, please visit www.elabscience.com.

Focus on your research Service for life science

Applications: WB-Western Blot IHC-Immunohistochemistry IF-Immunofluorescence IP-Immunoprecipitation FC-Flow cytometry ChIP-
Chromatin Immunoprecipitation Reactivity: H-Human R-Rat M-Mouse Mk-Monkey Dg-Dog Ch-Chicken Hm-Hamster Rb-Rabbit Sh-
Sheep Pg-Pig Z-Zebrafish X-Xenopus C-Cow.