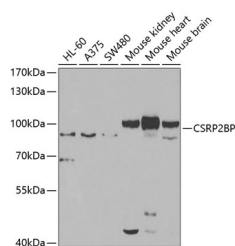


CSRP2BP Polyclonal Antibody

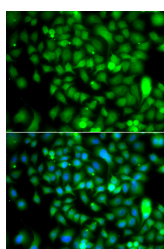
Catalog No.	E-AB-61680	Reactivity	H,M
Storage	Store at -20°C. Avoid freeze / thaw cycles.	Host	Rabbit
Applications	WB,IF	Isotype	IgG

Note: Centrifuge before opening to ensure complete recovery of vial contents.

Images



Western blot analysis of extracts of various cell lines using CSRP2BP Polyclonal Antibody at 1:1000 dilution.



Immunofluorescence analysis of A549 cells using CSRP2BP Polyclonal Antibody Blue: DAPI for nuclear staining.

Immunogen Information

Immunogen	Recombinant fusion protein of human CSRP2BP
GeneID	57325
Swissprot	Q9H8E8
Synonyms	KAT14, ATAC2, CRP2BP, CSRP2BP, PRO1194, dJ717 M23.1

Product Information

Calculated MW	74kDa/88kDa
Observed MW	89kDa
Buffer	PBS with 0.02% sodium azide, 50% glycerol, pH7.3.
Purify	Affinity purification
Dilution	WB 1:500-1:2000, IF 1:50-1:200

Background

CSRP2 is a protein containing two LIM domains, which are double zinc finger motifs found in proteins of diverse function. CSRP2 and some related proteins are thought to act as protein adapters, bridging two or more proteins to form a larger protein complex. The protein encoded by this gene binds to one of the LIM domains of CSRP2 and contains an acetyltransferase domain. Although the encoded protein has been detected in the cytoplasm, it is predominantly a nuclear protein. Alternatively spliced transcript variants have been described.

For Research Use Only

Thank you for your recent purchase.
 If you would like to learn more about antibodies, please visit www.elabscience.com.

**Focus on your research
 Service for life science**

Applications: WB-Western Blot IHC-Immunohistochemistry IF-Immunofluorescence IP-Immunoprecipitation FC-Flow cytometry ChIP-Chromatin Immunoprecipitation Reactivity: H-Human R-Rat M-Mouse Mk-Monkey Dg-Dog Ch-Chicken Hm-Hamster Rb-Rabbit Sh-Sheep Pg-Pig Z-Zebrafish X-Xenopus C-Cow.