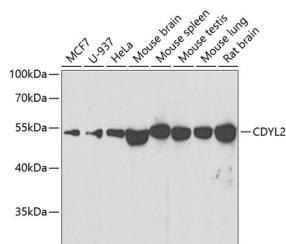


CDYL2 Polyclonal Antibody

Catalog No.	E-AB-61688	Reactivity	H,M,R
Storage	Store at -20°C. Avoid freeze / thaw cycles.	Host	Rabbit
Applications	WB	Isotype	IgG

Note: Centrifuge before opening to ensure complete recovery of vial contents.

Images



Western blot analysis of extracts of various cell lines using CDYL2 Polyclonal Antibody at dilution of 1:500.

Immunogen Information

Immunogen	Recombinant fusion protein of human CDYL2 (NP_689555.2).
GeneID	124359
Swissprot	Q8N8U2
Synonyms	CDYL2,PCCP1

Product Information

Calculated MW	56kDa
Observed MW	54kDa
Buffer	PBS with 0.02% sodium azide, 50% glycerol, pH7.3.
Purify	Affinity purification
Dilution	WB 1:500-1:2000

Background

CDYL2 (Chromodomain Y Like 2) is a Protein Coding gene. Gene Ontology (GO) annotations related to this gene include methylated histone binding. An important paralog of this gene is CDYL.

For Research Use Only

Thank you for your recent purchase.
 If you would like to learn more about antibodies, please visit www.elabscience.com.

**Focus on your research
 Service for life science**

Applications:WB-Western Blot IHC-Immunohistochemistry IF-Immunofluorescence IP-Immunoprecipitation FC-Flow cytometry ChIP-Chromatin Immunoprecipitation Reactivity: H-Human R-Rat M-Mouse Mk-Monkey Dg-Dog Ch-Chicken Hm-Hamster Rb-Rabbit Sh-Sheep Pg-Pig Z-Zebrafish X-Xenopus C-Cow.