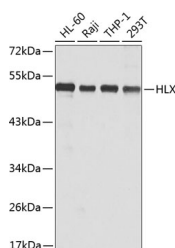


HLX Polyclonal Antibody

Catalog No.	E-AB-61702	Reactivity	H
Storage	Store at -20°C. Avoid freeze / thaw cycles.	Host	Rabbit
Applications	WB	Isotype	IgG

Note: Centrifuge before opening to ensure complete recovery of vial contents.

Images



Western blot analysis of extracts of various cell lines using HLX Polyclonal Antibody at dilution of 1:1000.

Immunogen Information

Immunogen	Recombinant fusion protein of human HLX (NP_068777.1).
GeneID	3142
Swissprot	Q14774
Synonyms	HLX,HB24,HLX1

Product Information

Calculated MW	50kDa
Observed MW	51kDa
Buffer	PBS with 0.02% sodium azide, 50% glycerol, pH7.3.
Purify	Affinity purification
Dilution	WB 1:500-1:2000

Background

HLX (H2.0 Like Homeobox) is a Protein Coding gene. Diseases associated with HLX include Diaphragmatic Hernia-Short Bowel-Asplenia Syndrome and Osteogenesis Imperfecta, Type Vii. Among its related pathways are IL12-mediated signaling events. Gene Ontology (GO) annotations related to this gene include sequence-specific DNA binding. An important paralog of this gene is DBX1.

For Research Use Only

Thank you for your recent purchase.
 If you would like to learn more about antibodies, please visit www.elabscience.com.

Focus on your research
Service for life science

Applications:WB-Western Blot IHC-Immunohistochemistry IF-Immunofluorescence IP-Immunoprecipitation FC-Flow cytometry ChIP-Chromatin Immunoprecipitation Reactivity: H-Human R-Rat M-Mouse Mk-Monkey Dg-Dog Ch-Chicken Hm-Hamster Rb-Rabbit Sh-Sheep Pg-Pig Z-Zebrafish X-Xenopus C-Cow.