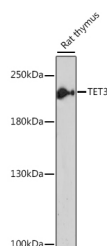


TET3 Polyclonal Antibody

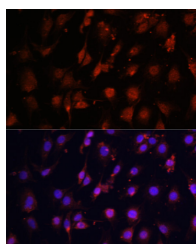
Catalog No.	E-AB-62581	Reactivity	H,M,R
Storage	Store at -20°C. Avoid freeze / thaw cycles.	Host	Rabbit
Applications	WB,IF	Isotype	IgG

Note: Centrifuge before opening to ensure complete recovery of vial contents.

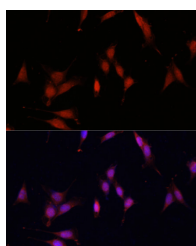
Images



Western blot analysis of extracts of Rat thymus using TET3 Polyclonal Antibody at dilution of 1:1000.



Immunofluorescence analysis of C6 cells using TET3 Polyclonal Antibody at dilution of 1:100. Blue: DAPI for nuclear staining.



Immunofluorescence analysis of NIH/3T3 using TET3 Polyclonal Antibody at dilution of 1:100. Blue: DAPI for nuclear staining.

Immunogen Information

Immunogen	Recombinant fusion protein of human TET3 (NP_001274420.1).
GeneID	200424
Swissprot	O43151
Synonyms	TET3,hCG_40738,TET3

Product Information

Calculated MW	77kDa/166kDa/179kDa
Observed MW	200kDa
Buffer	PBS with 0.02% sodium azide, 50% glycerol, pH7.3.
Purify	Affinity purification
Dilution	WB 1:500-1:2000 IF 1:50-1:200

Background

TET3 (Tet Methylcytosine Dioxygenase 3) is a Protein Coding gene. Diseases associated with TET3 include Beck-Fahrner Syndrome and Miles-Carpenter Syndrome. Among its related pathways are MECP2 and Associated Rett Syndrome and Activated PKN1 stimulates transcription of AR (androgen receptor) regulated genes KLK2 and KLK3. Gene Ontology (GO) annotations related to this gene include methylcytosine dioxygenase activity. An important paralog of this gene is TET2.

For Research Use Only

Thank you for your recent purchase.
If you would like to learn more about antibodies, please visit www.elabscience.com.

Focus on your research Service for life science

Applications:WB-Western Blot IHC-Immunohistochemistry IF-Immunofluorescence IP-Immunoprecipitation FC-Flow cytometry ChIP-Chromatin Immunoprecipitation Reactivity: H-Human R-Rat M-Mouse Mk-Monkey Dg-Dog Ch-Chicken Hm-Hamster Rb-Rabbit Sh-Sheep Pg-Pig Z-Zebrafish X-Xenopus C-Cow.