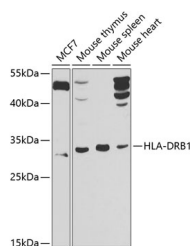


HLA-DRB1 Polyclonal Antibody

Catalog No.	E-AB-62784	Reactivity	H,M
Storage	Store at -20°C. Avoid freeze / thaw cycles.	Host	Rabbit
Applications	WB	Isotype	IgG

Note: Centrifuge before opening to ensure complete recovery of vial contents.

Images



Western blot analysis of extracts of various cell lines using HLA-DRB1 Polyclonal Antibody at 1:1000 dilution.

Immunogen Information

Immunogen	Recombinant fusion protein of human HLA-DRB1
GeneID	3123
Swissprot	P01911,P01912,Q29974
Synonyms	HLA-DRB1,DRB1,HLA-DR1B,HLA-DRB,SS1,major histocompatibility complex,class II,DR beta 1

Product Information

Calculated MW	30kDa
Observed MW	30kDa
Buffer	PBS with 0.02% sodium azide,50% glycerol,pH7.3.
Purify	Affinity purification
Dilution	WB 1:500-1:2000

Background

HLA-DRB1 belongs to the HLA class II beta chain paralogs. The class II molecule is a heterodimer consisting of an alpha (DRA) and a beta chain (DRB), both anchored in the membrane. It plays a central role in the immune system by presenting peptides derived from extracellular proteins. Class II molecules are expressed in antigen presenting cells (APC: B lymphocytes, dendritic cells, macrophages). The beta chain is approximately 26-28 kDa. It is encoded by 6 exons. Exon one encodes the leader peptide; exons 2 and 3 encode the two extracellular domains; exon 4 encodes the transmembrane domain; and exon 5 encodes the cytoplasmic tail. Within the DR molecule the beta chain contains all the polymorphisms specifying the peptide binding specificities. Hundreds of DRB1 alleles have been described and typing for these polymorphisms is routinely done for bone marrow and kidney transplantation. DRB1 is expressed at a level five times higher than its paralogs DRB3, DRB4 and DRB5. DRB1 is present in all individuals. Allelic variants of DRB1 are linked with either none or one of the genes DRB3, DRB4 and DRB5. There are 4 related pseudogenes: DRB2, DRB6, DRB7, DRB8 and DRB9.

For Research Use Only

Thank you for your recent purchase.
 If you would like to learn more about antibodies, please visit www.elabscience.com.

**Focus on your research
 Service for life science**

Applications:WB-Western Blot IHC-Immunohistochemistry IF-Immunofluorescence IP-Immunoprecipitation FC-Flow cytometry ChIP-Chromatin Immunoprecipitation Reactivity: H-Human R-Rat M-Mouse Mk-Monkey Dg-Dog Ch-Chicken Hm-Hamster Rb-Rabbit Sh-Sheep Pg-Pig Z-Zebrafish X-Xenopus C-Cow.