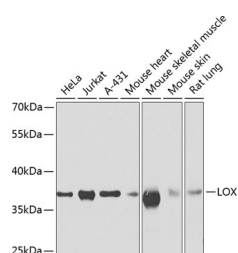


LOX Polyclonal Antibody

Catalog No.	E-AB-62819	Reactivity	H,M,R
Storage	Store at -20°C. Avoid freeze / thaw cycles.	Host	Rabbit
Applications	WB	Isotype	IgG

Note: Centrifuge before opening to ensure complete recovery of vial contents.

Images



Western blot analysis of extracts of various cell lines using LOX Polyclonal Antibody at dilution of 1:500.

Immunogen Information

Immunogen	A synthetic peptide of human LOX
GeneID	4015
Swissprot	P28300
Synonyms	LOX,AAT10

Product Information

Calculated MW	46kDa
Observed MW	38kDa
Buffer	PBS with 0.02% sodium azide, 50% glycerol, pH7.3.
Purify	Affinity purification
Dilution	WB 1:500-1:2000

Background

This gene encodes a member of the lysyl oxidase family of proteins. Alternative splicing results in multiple transcript variants, at least one of which encodes a preproprotein that is proteolytically processed to generate a regulatory propeptide and the mature enzyme. The copper-dependent amine oxidase activity of this enzyme functions in the crosslinking of collagens and elastin, while the propeptide may play a role in tumor suppression. In addition, defects in this gene have been linked with predisposition to thoracic aortic aneurysms and dissections.

For Research Use Only

Thank you for your recent purchase.
 If you would like to learn more about antibodies, please visit www.elabscience.com.

**Focus on your research
 Service for life science**

Applications: WB-Western Blot IHC-Immunohistochemistry IF-Immunofluorescence IP-Immunoprecipitation FC-Flow cytometry ChIP-Chromatin Immunoprecipitation Reactivity: H-Human R-Rat M-Mouse Mk-Monkey Dg-Dog Ch-Chicken Hm-Hamster Rb-Rabbit Sh-Sheep Pg-Pig Z-Zebrafish X-Xenopus C-Cow.