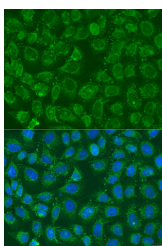


## PIP5K1B Polyclonal Antibody

<b>Catalog No.</b>	E-AB-65557	<b>Reactivity</b>	H,M,R
<b>Storage</b>	Store at -20°C. Avoid freeze / thaw cycles.	<b>Host</b>	Rabbit
<b>Applications</b>	IF	<b>Isotype</b>	IgG

**Note:** Centrifuge before opening to ensure complete recovery of vial contents.

### Images



Immunofluorescence analysis of U2OS cells using PIP5K1B Polyclonal Antibody at dilution of 1:100. Blue: DAPI for nuclear staining.

### Immunogen Information

<b>Immunogen</b>	Recombinant fusion protein of human PIP5K1B (NP_003549.1).
<b>GeneID</b>	8395
<b>Swissprot</b>	O14986
<b>Synonyms</b>	PIP5K1B,MSS4,STM7

### Product Information

<b>Buffer</b>	PBS with 0.02% sodium azide, 50% glycerol, pH7.3.
<b>Purify</b>	Affinity purification
<b>Dilution</b>	IF 1:50-1:200

### Background

Phosphatidylinositol-4-phosphate-5-kinase (PIP5K) synthesizes phosphatidylinositol-4,5-bisphosphate, which regulates various processes including cell proliferation, survival, membrane trafficking, and cytoskeletal organization. The PIP5K family is divided into type I, type II and type III. Each type of the PIP5K family phosphorylate distinct substrates and they contain an activation loop, which determines their enzymatic specificity and subcellular targeting. The phosphatidylinositol-4-phosphate-5-kinase type I consists of three members, PIP5K I $\alpha$ , I $\beta$ , and I $\gamma$ , which are characterized by phosphorylating PI4P on the 5-hydroxyl. PIP5K I $\beta$  (designated PIP5K I $\beta$  in mouse) is expressed in brain tissue. PIP5K I $\gamma$ , designated PIP5K I $\gamma$  in mouse, is also called STM7. PIP5K I has two variants produced by alternative splicing which are expressed in lung, brain, and kidneys.

#### For Research Use Only

Thank you for your recent purchase.  
 If you would like to learn more about antibodies, please visit [www.elabscience.com](http://www.elabscience.com).

**Focus on your research  
 Service for life science**

Applications: WB-Western Blot IHC-Immunohistochemistry IF-Immunofluorescence IP-Immunoprecipitation FC-Flow cytometry ChIP-Chromatin Immunoprecipitation Reactivity: H-Human R-Rat M-Mouse Mk-Monkey Dg-Dog Ch-Chicken Hm-Hamster Rb-Rabbit Sh-Sheep Pg-Pig Z-Zebrafish X-Xenopus C-Cow.