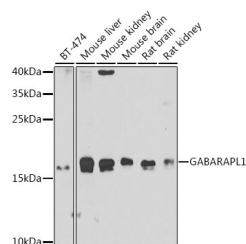


## GABARAPL1 Polyclonal Antibody

<b>Catalog No.</b>	E-AB-62401	<b>Reactivity</b>	H,M,R
<b>Storage</b>	Store at -20°C. Avoid freeze / thaw cycles.	<b>Host</b>	Rabbit
<b>Applications</b>	WB	<b>Isotype</b>	IgG

**Note:** Centrifuge before opening to ensure complete recovery of vial contents.

### Images



Western blot analysis of extracts of various cell lines using GABARAPL1 Polyclonal Antibody at dilution of 1:1000.

### Immunogen Information

<b>Immunogen</b>	Recombinant fusion protein of human GABARAPL1 (NP_113600.1).
<b>GeneID</b>	23710
<b>Swissprot</b>	Q9H0R8
<b>Synonyms</b>	GABARAPL1,APG8-LIKE,APG8L,ATG8,ATG8B,ATG8L,GEC1

### Product Information

<b>Calculated MW</b>	14kDa/17kDa
<b>Observed MW</b>	16kDa
<b>Buffer</b>	PBS with 0.02% sodium azide, 50% glycerol, pH7.3.
<b>Purify</b>	Affinity purification
<b>Dilution</b>	WB 1:500-1:2000

### Background

GABARAPL1 (GABA Type A Receptor Associated Protein Like 1) is a Protein Coding gene. Diseases associated with GABARAPL1 include Alzheimer Disease 13 and Vici Syndrome. Among its related pathways are Macroautophagy and Apelin signaling pathway. Gene Ontology (GO) annotations related to this gene include microtubule binding and GABA receptor binding. An important paralog of this gene is GABARAP.

#### For Research Use Only

Thank you for your recent purchase.  
 If you would like to learn more about antibodies, please visit [www.elabscience.com](http://www.elabscience.com).

**Focus on your research  
 Service for life science**

Applications:WB-Western Blot IHC-Immunohistochemistry IF-Immunofluorescence IP-Immunoprecipitation FC-Flow cytometry ChIP-Chromatin Immunoprecipitation Reactivity: H-Human R-Rat M-Mouse Mk-Monkey Dg-Dog Ch-Chicken Hm-Hamster Rb-Rabbit Sh-Sheep Pg-Pig Z-Zebrafish X-Xenopus C-Cow.