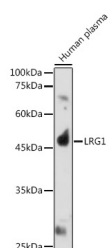


LRG1 Polyclonal Antibody

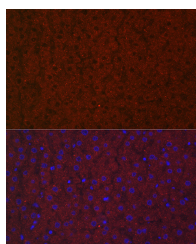
Catalog No.	E-AB-63201	Reactivity	H,M,R
Storage	Store at -20°C. Avoid freeze / thaw cycles.	Host	Rabbit
Applications	WB,IF	Isotype	IgG

Note: Centrifuge before opening to ensure complete recovery of vial contents.

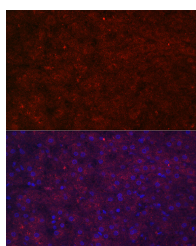
Images



Western blot analysis of extracts of Human plasma using LRG1 Polyclonal Antibody at 1:1000 dilution.



Immunofluorescence analysis of rat liver cells using LRG1 Polyclonal Antibody at dilution of 1:100 (40x lens). Blue: DAPI for nuclear staining.



Immunofluorescence analysis of human liver cells using LRG1 Polyclonal antibody at dilution of 1:100 (40x lens). Blue: DAPI for nuclear staining.

Immunogen Information

Immunogen	Recombinant fusion protein of human LRG1
GeneID	116844
Swissprot	P02750
Synonyms	LRG1, HMFT1766, LRG

Product Information

Calculated MW	38kDa
Observed MW	45kDa
Buffer	PBS with 0.05% proclin300, 50% glycerol, pH7.3.
Purify	Affinity purification
Dilution	WB 1:500-1:2000, IF 1:50-1:200

Background

The leucine-rich repeat (LRR) family of proteins, including LRG1, have been shown to be involved in protein-protein interaction, signal transduction, and cell adhesion and development. LRG1 is expressed during granulocyte differentiation (O'Connell et al., 2002 [PubMed 12223515]).

For Research Use Only

Thank you for your recent purchase.
 If you would like to learn more about antibodies, please visit www.elabscience.com.

**Focus on your research
 Service for life science**

Applications: WB-Western Blot IHC-Immunohistochemistry IF-Immunofluorescence IP-Immunoprecipitation FC-Flow cytometry ChIP-Chromatin Immunoprecipitation Reactivity: H-Human R-Rat M-Mouse Mk-Monkey Dg-Dog Ch-Chicken Hm-Hamster Rb-Rabbit Sh-Sheep Pg-Pig Z-Zebrafish X-Xenopus C-Cow.