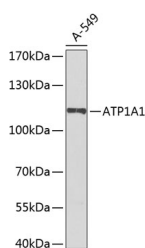


## ATP1A1 Polyclonal Antibody

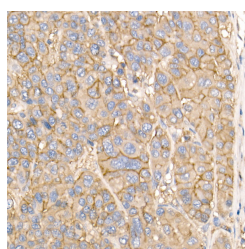
<b>Catalog No.</b>	E-AB-62634	<b>Reactivity</b>	H,M,R
<b>Storage</b>	Store at -20°C. Avoid freeze / thaw cycles.	<b>Host</b>	Rabbit
<b>Applications</b>	WB,IHC	<b>Isotype</b>	IgG

**Note:** Centrifuge before opening to ensure complete recovery of vial contents.

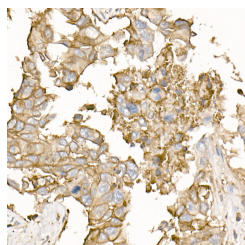
### Images



Western blot analysis of extracts of various cell lines using Na<sup>+</sup>/K<sup>+</sup>-ATPase Polyclonal Antibody at 1:500 dilution.



Immunohistochemistry of paraffin-embedded human liver cancer using Na<sup>+</sup>/K<sup>+</sup>-ATPase Polyclonal Antibody at dilution of 1:50 (40x lens). Perform high pressure antigen retrieval with 10 mM citrate buffer pH 6.0 before commencing with IHC staining protocol.



Immunohistochemistry of paraffin-embedded human lung cancer using Na<sup>+</sup>/K<sup>+</sup>-ATPase Polyclonal antibody at dilution of 1:50 (40x lens). Perform

### Immunogen Information

<b>Immunogen</b>	A synthetic peptide of human ATP1A1
<b>GeneID</b>	476
<b>Swissprot</b>	P05023
<b>Synonyms</b>	ATP1A1,ATPase Na <sup>+</sup> /K <sup>+</sup> transporting subunit alpha 1,ATP1A,CMT2DD,HOMGSMR2

### Product Information

<b>Calculated MW</b>	74kDa/109kDa/112kDa/113kDa
<b>Observed MW</b>	100KDa
<b>Buffer</b>	PBS with 0.05% proclin300,50% glycerol,pH7.3.
<b>Purify</b>	Affinity purification
<b>Dilution</b>	WB 1:500-1:2000,IHC 1:50-1:200

### Background

The protein encoded by this gene belongs to the family of P-type cation transport ATPases, and to the subfamily of Na<sup>+</sup>/K<sup>+</sup>-ATPases. Na<sup>+</sup>/K<sup>+</sup>-ATPase is an integral membrane protein responsible for establishing and maintaining the electrochemical gradients of Na and K ions across the plasma membrane. These gradients are essential for osmoregulation, for sodium-coupled transport of a variety of organic and inorganic molecules, and for electrical excitability of nerve and muscle. This enzyme is composed of two subunits, a large catalytic subunit (alpha) and a smaller glycoprotein subunit (beta). The catalytic subunit of Na<sup>+</sup>/K<sup>+</sup>-ATPase is encoded by multiple genes. This gene encodes an alpha 1 subunit. Multiple transcript variants encoding different isoforms have been found for this gene.

### For Research Use Only

Thank you for your recent purchase.  
 If you would like to learn more about antibodies, please visit [www.elabscience.com](http://www.elabscience.com).

**Focus on your research**  
**Service for life science**

Applications:WB-Western Blot IHC-Immunohistochemistry IF-Immunofluorescence IP-Immunoprecipitation FC-Flow cytometry ChIP-Chromatin Immunoprecipitation Reactivity: H-Human R-Rat M-Mouse Mk-Monkey Dg-Dog Ch-Chicken Hm-Hamster Rb-Rabbit Sh-Sheep Pg-Pig Z-Zebrafish X-Xenopus C-Cow.

---

high pressure antigen retrieval with 10 mM citrate buffer pH 6.0 before commencing with IHC staining protocol.

## For Research Use Only

Thank you for your recent purchase.

If you would like to learn more about antibodies, please visit [www.elabscience.com](http://www.elabscience.com).

**Focus on your research  
Service for life science**

Applications:WB-Western Blot IHC-Immunohistochemistry IF-Immunofluorescence IP-Immunoprecipitation FC-Flow cytometry CHIP-Chromatin Immunoprecipitation Reactivity: H-Human R-Rat M-Mouse Mk-Monkey Dg-Dog Ch-Chicken Hm-Hamster Rb-Rabbit Sh-Sheep Pg-Pig Z-Zebrafish X-Xenopus C-Cow.