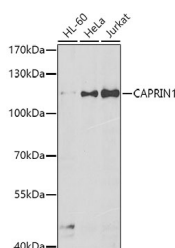


CAPRIN1 Polyclonal Antibody

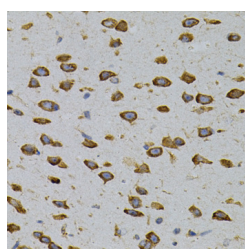
Catalog No.	E-AB-62119	Reactivity	H,M,R
Storage	Store at -20°C. Avoid freeze / thaw cycles.	Host	Rabbit
Applications	WB,IHC	Isotype	IgG

Note: Centrifuge before opening to ensure complete recovery of vial contents.

Images



Western blot analysis of extracts of various cell lines using CAPRIN1 Polyclonal Antibody at dilution of 1:500.



Immunohistochemistry of paraffin-embedded Mouse brain using CAPRIN1 Polyclonal Antibody

Immunogen Information

Immunogen	Recombinant protein of human CAPRIN1
GeneID	4076
Swissprot	Q14444
Synonyms	CAPRIN1,GPIAP1,GPIP137,GRIP137,M11S1,RNG105,p137GPI,caprin-1

Product Information

Calculated MW	76kDa/78kDa
Observed MW	120kDa
Buffer	PBS with 0.02% sodium azide, 50% glycerol, pH7.3.
Purify	Affinity purification
Dilution	WB 1:500-1:2000 IHC 1:100-1:200

Background

Caprin-1 is a protein that in humans is encoded by the CAPRIN1 gene. May regulate the transport and translation of mRNAs of proteins involved in synaptic plasticity in neurons and cell proliferation and migration in multiple cell types. May form homomultimers. Directly interacts with G3BP1 in cytoplasmic RNA granules. Binds directly and selectively to MYC and CCND2 RNAs. In neuronal cells, directly binds to several mRNAs associated with RNA granules, including BDNF, CAMK2A, CREB1, MAP2, NTRK2 mRNAs, as well as to GRIN1 and KPNB1 mRNAs, but not to rRNAs.

For Research Use Only

Thank you for your recent purchase.
 If you would like to learn more about antibodies, please visit www.elabscience.com.

**Focus on your research
 Service for life science**

Applications: WB-Western Blot IHC-Immunohistochemistry IF-Immunofluorescence IP-Immunoprecipitation FC-Flow cytometry ChIP-Chromatin Immunoprecipitation Reactivity: H-Human R-Rat M-Mouse Mk-Monkey Dg-Dog Ch-Chicken Hm-Hamster Rb-Rabbit Sh-Sheep Pg-Pig Z-Zebrafish X-Xenopus C-Cow.